

FORTNIGHTLY

UK £10.99, EIRE/MALTA €16.99, AUS/NZ \$20.99 (inc. GST), US \$21.95

EAGLEMOSS
COLLECTIONS

79

STAR TREK™

THE OFFICIAL STARSHIPS COLLECTION



HARRY MUDD'S
CLASS-J STARSHIP

TYPE: CARGO

IN USE: 23rd CENTURY

CREW: SIX

LENGTH: 18 METERS

Contents

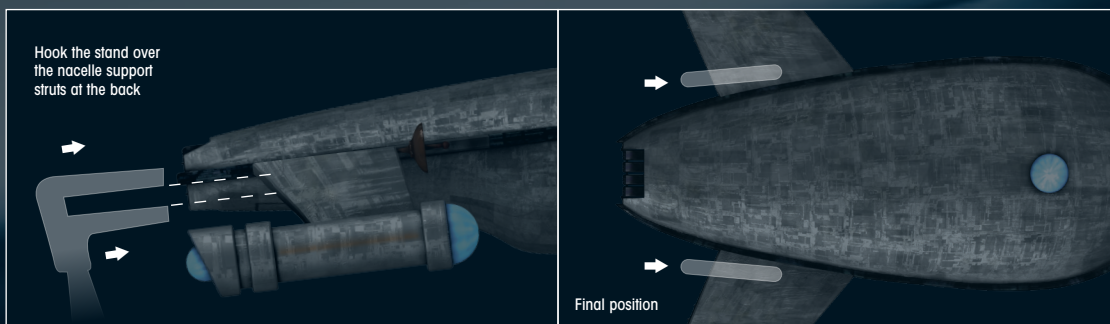
04: HARRY MUDD'S CLASS-J STARSHIP

10: DESIGNING THE SHIP

12: WOMEN OF STAR TREK

18: ON SCREEN

Stand assembly:



ORDER ONLINE

Order binders, missing issues or other Eaglemoss products at:
www.mycollectionshop.com

www.mycollectionshop.com

EAGLEMOSS COLLECTIONS

Eaglemoss Publications Ltd. 2016
 1st Floor, Kensington Village, Avonmore Road,
 W14 8TS, London, UK. All rights reserved.

™ & © 2016 CBS Studios Inc. © 2016 Paramount Pictures Corp. STAR TREK and related marks and logos are trademarks of CBS Studios Inc. All Rights Reserved.

Development Director:
 Maggie Calmels

STAR TREK – The Official Starships Collection is published fortnightly.

DON'T MISS AN ISSUE: place a regular order with your magazine retailer.

SUBSCRIBE and receive exclusive free gifts –
www.startrek-starships.com
 Call 0344 493 6091
 Post the subscription form included with issues 1 to 5

BACK ISSUES
 To order back issues: Order online at
www.startrek-starships.com or call 0344 493 6091

UK distributor: COMAG Magazine Marketing

Find us on Facebook
 Join us online for competitions, updates and more!

CUSTOMER SERVICES:
www.startrek-starships.com

UK: 0344 493 6091
startrek-ship@eaglemoss-service.com

Australia: (03) 9872 4000
bissett@bissettmags.com.au

New Zealand: (09) 308 2871
 Fax: (09) 302 7661
subs@ndc.co.nz

South Africa: (011) 265 4307
service@jacklin.co.za

Malaysia: (03) 8020 7112
sales@allscript.com

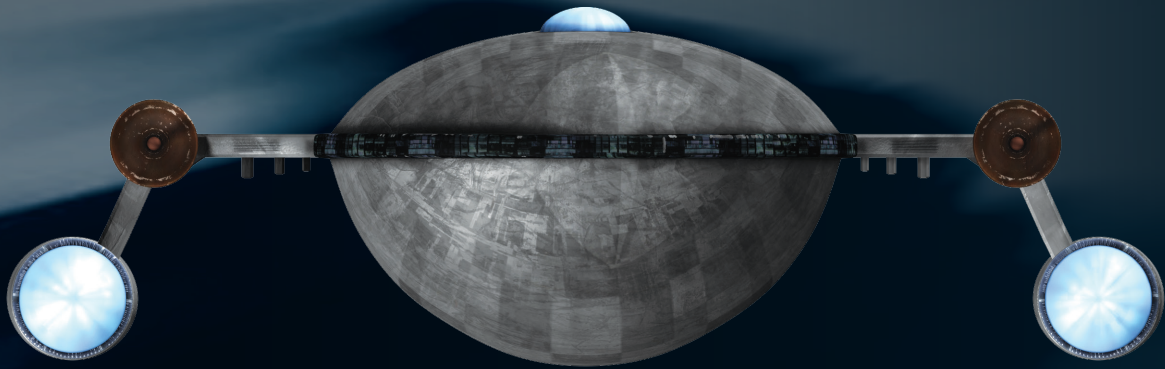
Singapore: (65) 6287 7090
sales@allscript.com

OVERSEAS BACK ISSUES
 Place your order with your local magazine retailer.

Recommended age 14+.
 Warning! Collectable figurines.
 Not designed or intended for play by children.
 Do not dispose of in domestic waste.

HARRY MUDD'S CLASS-J STARSHIP

SPECIFICATION



TYPE: CARGO

AFFILIATION: INDEPENDENT

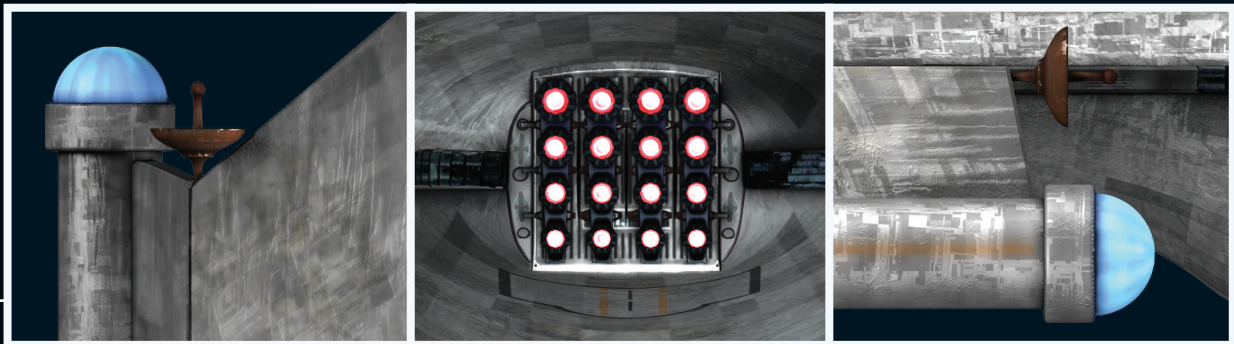
IN USE: 23rd CENTURY

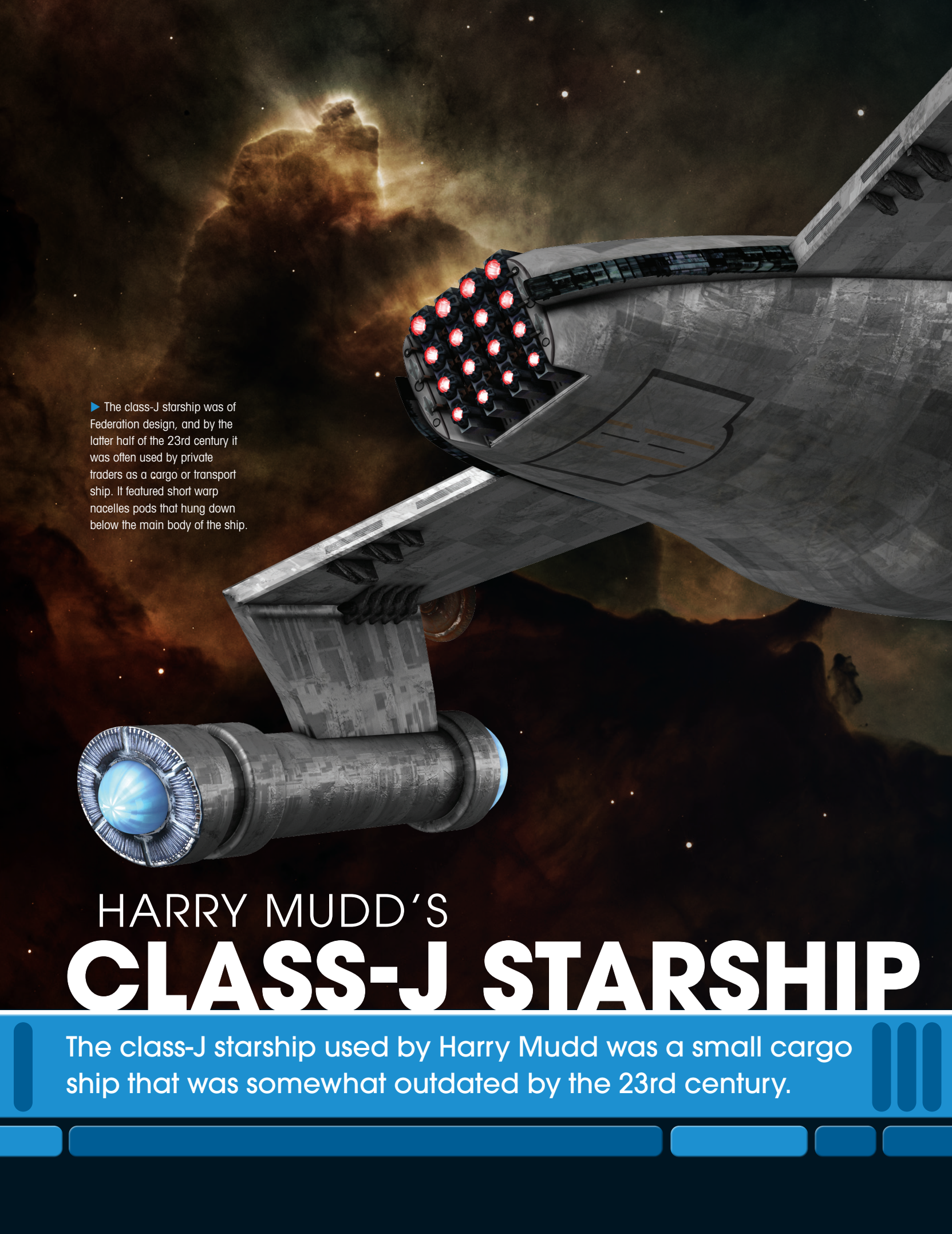
LENGTH: 18 METERS (APPROX.)

CREW: SIX

TOP SPEED: WARP 4

WEAPONRY: PHASER EMITTER





▶ The class-J starship was of Federation design, and by the latter half of the 23rd century it was often used by private traders as a cargo or transport ship. It featured short warp nacelles pods that hung down below the main body of the ship.

HARRY MUDD'S CLASS-J STARSHIP

The class-J starship used by Harry Mudd was a small cargo ship that was somewhat outdated by the 23rd century.



The starship being piloted by Harcourt Fenton Mudd in 2266 was a class-J vessel that was normally used for cargo or transport duties. It was a small ship at approximately 18 meters in length, and was utilized by both Federation and independent traders.

By the mid-23rd century, the class-J was somewhat antiquated, having been in use for some time, but it was warp capable and featured nacelles on outriggers that hung down below the main body of the ship. The ship possessed two deflectors, positioned either side on the front of



the nacelle pylons for clearing space debris out of the way. It also featured a centrally mounted impulse engine at the rear, above the undercut on the back of the lower hull, a style feature that was similar to a number of Starfleet ships.

This version of the class-J vessel did not feature any windows, not even at the front where the cockpit was situated. Other ships of this type did include several oval-shaped windows along either side and one at the very front. Mudd's ship relied on a brightly-lit blue sensor dome on top to 'see' the way ahead and scan the surrounding space. The interior was large enough to accommodate around six people.

PROTECTED PROPULSION

When Mudd realized he was being pursued by the *U.S.S. Enterprise* NCC-1701, he refused to answer their hails and tried to outrun the Starfleet ship. At first, the *Enterprise* could not identify the vessel because its registration beam had been disabled. As the *Enterprise* closed in on it, Spock was able to get a sensor reading, which correctly identified it as a class-J cargo ship. He was also able to ascertain that its engines were super-heating, as they were being pushed too hard in a futile effort to escape.

Perhaps Mudd was an inexperienced captain – he later claimed that the original captain had suddenly died and he had no choice but to take over – but he attempted to evade the *Enterprise* by entering an asteroid field. This was a suicidal course of action. It was highly unlikely that the ship would avoid the huge chunks of rock that littered this area of space, even with its deflector working at full capacity. As it was, it was not long before its red-hot engines went past critical and ceased working altogether.

Mudd's ship was now drifting helplessly through the field and it was only a matter of time before an asteroid would smash into it. With no other options available, Captain Kirk elected to throw

◀ The crew of the *U.S.S. Enterprise* first got a glimpse of Harry Mudd's starship on the viewscreen as it tried to escape into an asteroid field. The vessel was worn with age and not emitting an identification beam, which meant it was causing a menace to navigation. Captain Kirk wanted to question its occupants, but Mudd refused to answer.



▲ The three women who were aboard Harry Mudd's starship were Eve, Ruth and Magda. They were from different planets, but their prospects were limited. Mudd had arranged to sell them into marriage with settlers on Ophiucus III. To make sure that they would be accepted, he gave them the Venus drug, which temporarily enhanced their beauty.

the *Enterprise's* deflector screen around the vulnerable ship, giving them time to try and beam the occupants to safety.

This course of action was only a temporary fix, however, as the extra load on the *Enterprise's* power caused its own engines to overheat. It was not long before one of its four lithium crystal circuits blew. By this point, Mudd had activated a distress signal from his ship that the *Enterprise's* transporter could lock onto, and they beamed him to safety. He appeared to be completely oblivious to the danger he was in and was more concerned to know where he now found himself. He also claimed that he refused to answer hails and tried to make a run for it because he did not know who was chasing him.

As two more lithium circuits blew on the *Enterprise*, Chief Engineer Scott managed to get a transporter lock on the three remaining

people aboard Mudd's ship. Supplementing the transporter with battery power, Scotty began to beam them aboard the *Enterprise* just as a huge asteroid smashed into Mudd's ship, obliterating it to pieces. For a few tense seconds Scotty was unsure if he had managed to get the remaining people in time, but then three stunning women materialized on the transporter pad.

BEWITCHING CARGO

Mudd explained that the women were not his crew, but his "cargo." He was taking them to the frontier planet of Ophiucus III where they could marry some of the settlers. Immediately, Kirk noticed that these women were beyond beautiful, as they had a mysterious magnetic effect on his crew that could not be explained.

Kirk placed Mudd under arrest for operating a ship without a master's license, travelling

► The J-class ship had a lozenge-shaped main body, with the impulse engine emitting a red light at the rear. The blue light on the top was a sensor dome, and was used to navigate the vessel through space.

▼ The *Enterprise's* viewscreen showed the moment when an asteroid smashed into the side of Harry Mudd's drifting starship. It was reduced to millions of tiny pieces by the ferocity of the impact.



without a flight plan, not broadcasting an identification beam and failing to answer a starship's signal. Mudd protested his innocence, and at first claimed he was Captain Leo Walsh. The *Enterprise's* computer soon confirmed his true identity as Harcourt Fenton Mudd. He had been convicted of smuggling, transporting stolen goods and purchasing a starship with counterfeit currency. Records also indicated that the effectiveness of psychiatric treatment on his criminal ways was disputed.

Mudd's reckless actions not only caused the destruction of his own ship, but also posed a grave threat to the *Enterprise*. It was now operating with just one lithium crystal working and that had a baseline fracture in it. They were forced to set a course to the nearest lithium mine on Rigel XII to obtain some replacement crystals.

This unscheduled diversion gave Mudd the

chance to plan an escape. He had been giving the women in his care the illegal Venus drug. This made them appear more attractive than they were and he planned to sell them to the miners on Rigel XII – in exchange for his freedom. In the end, Mudd's plan failed as the true appearance of the women was discovered, but the miners agreed to marry them anyway and Mudd was taken to trial.

▲ The Venus drug was an illegal chemical that enhanced the taker's most attractive qualities. The effect did not last long, but while it was working, the women had an almost hypnotic effect on the men around them.



DATA FEED

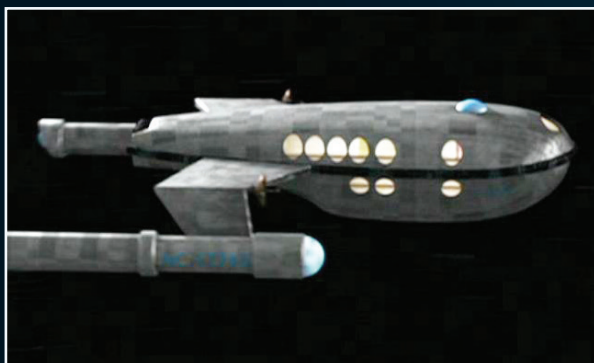
Harry Mudd was a rogue trader and smuggler. He did not have much of a conscience and was prepared to sell women into marriage for the highest price. He lived by his wits, but unfortunately for him he was rather lacking in the brains department. The crew of the *Enterprise* encountered him again when they found him on a planet inhabited entirely by androids. They tended to his every whim, but he was not allowed to leave as they wanted to study him.

OTHER EXAMPLES

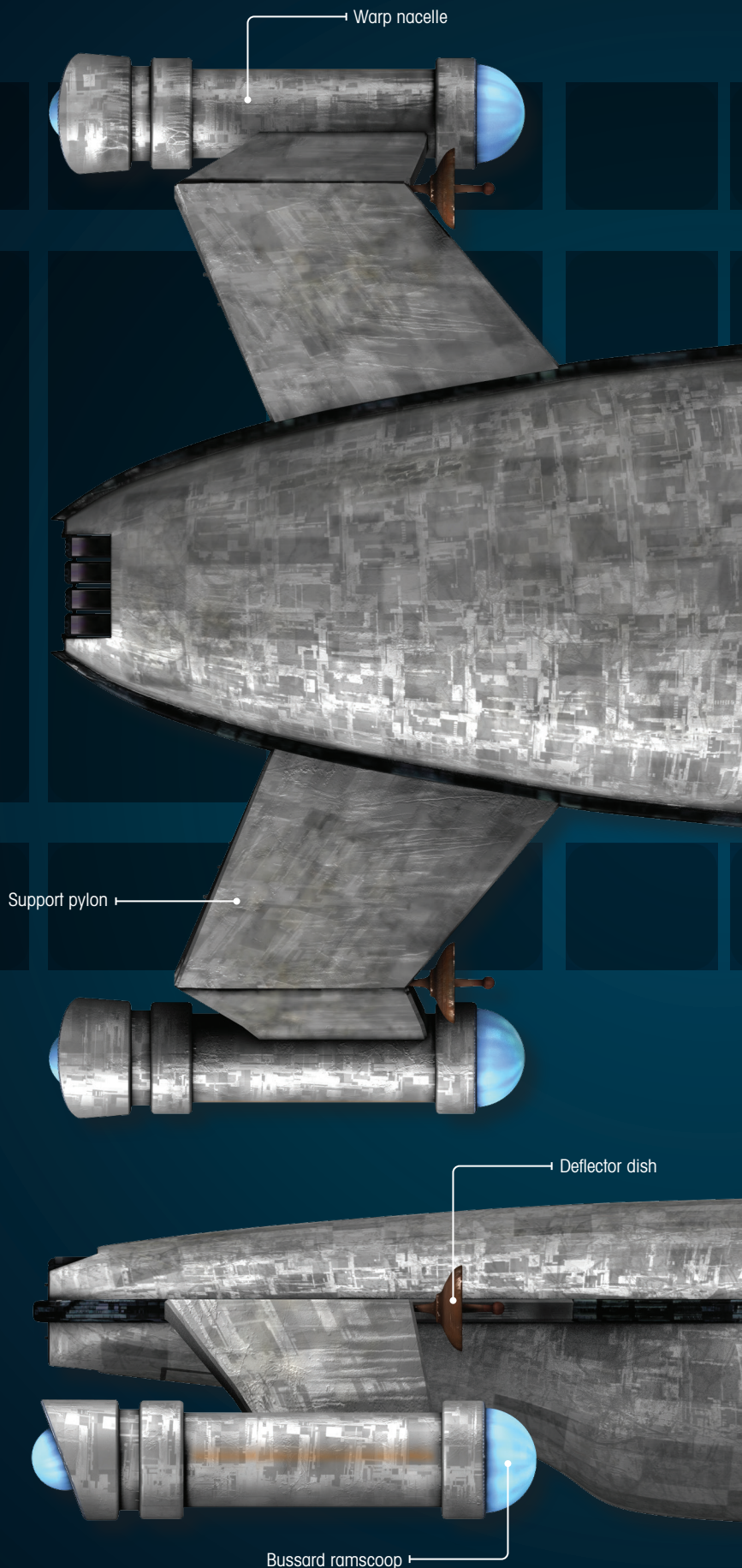
Harry Mudd's J-class starship was not the only ship of this class in use in the 23rd century. In 2266, Starfleet used one of these vessels to train cadets. Fleet Captain Pike was carrying out an inspection on this vessel when a baffle plate ruptured, exposing him and the other occupants to delta radiation. Pike received an extremely high dose as he attempted to rescue the cadets. It left him with severe burns and confined to a wheelchair.

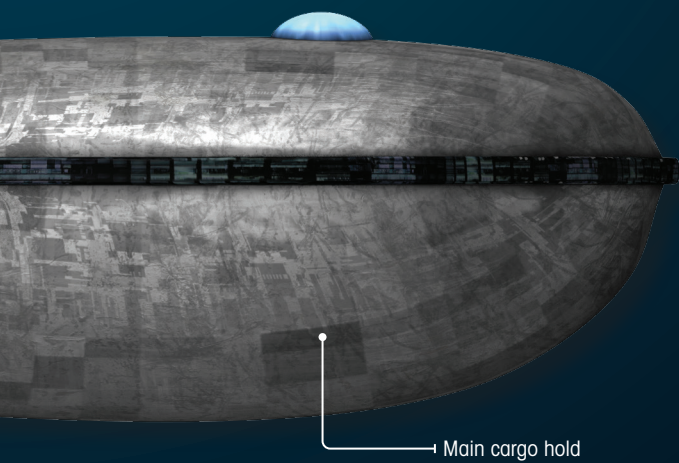
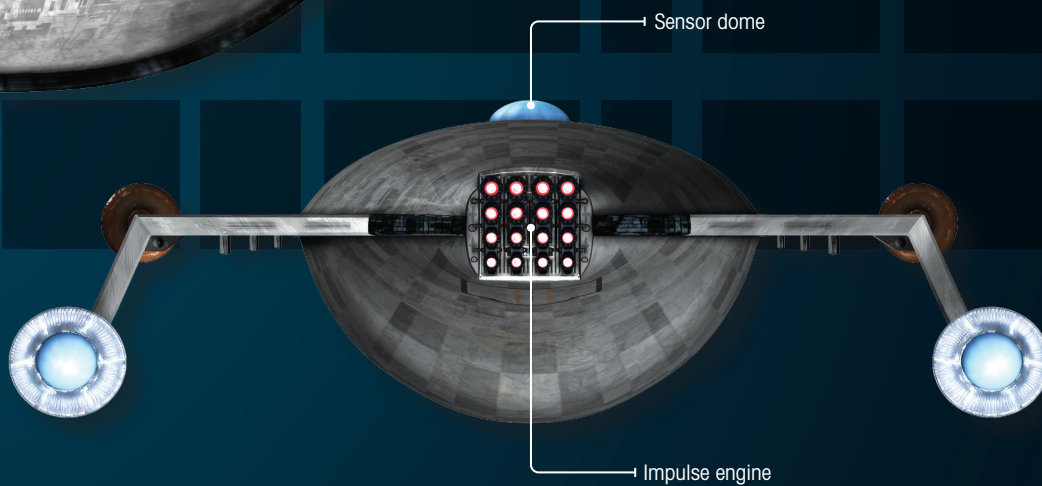
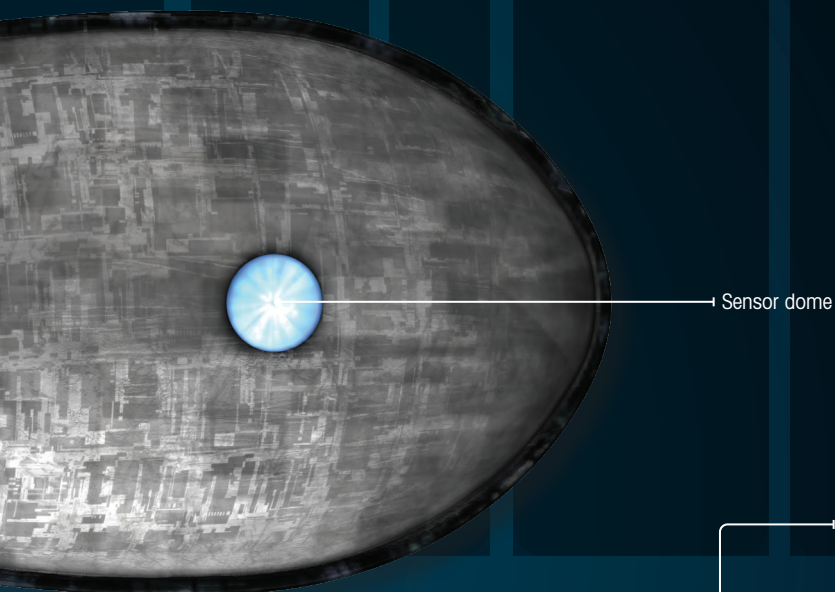
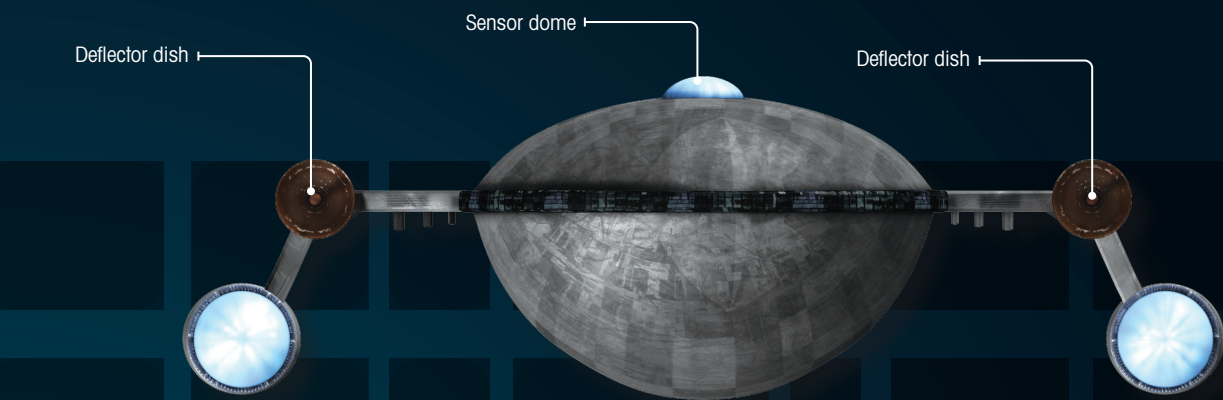
A colony on Deneva also had use of a J-class starship, which was described as a one-man vessel. In 2267, a pilot flew the craft into the Denevan sun after he had been infected with neural parasites. Even at warp 8, the *Enterprise* was unable to intercept it before it burned up in the atmosphere of the sun.

In 2269, another J-class starship was seen in operation when one was stolen by Dr. Sevrin and his five followers. This ship was called the *Aurora* and was slightly different than Mudd's vessel in that it had windows. They used the craft in an effort to find the mythical planet of Eden, but it was destroyed when it tried to pull free of the *Enterprise*'s tractor beam.



▲ The *Aurora* was a J-class starship used by Dr. Sevrin and his followers. It was almost the same as the ship used by Harry Mudd, except it featured windows and slightly longer nacelles.





DATA FEED

In a humorous nod to Harry Mudd's comments about his estranged wife in the episode 'I, Mudd,' this class-J starship was going to be called 'Stella.' Mike Okuda, the visual effects producer of the remastered episode, said it would have been labeled with this name if the ship had been seen more clearly.

DIFFERENT SHIP

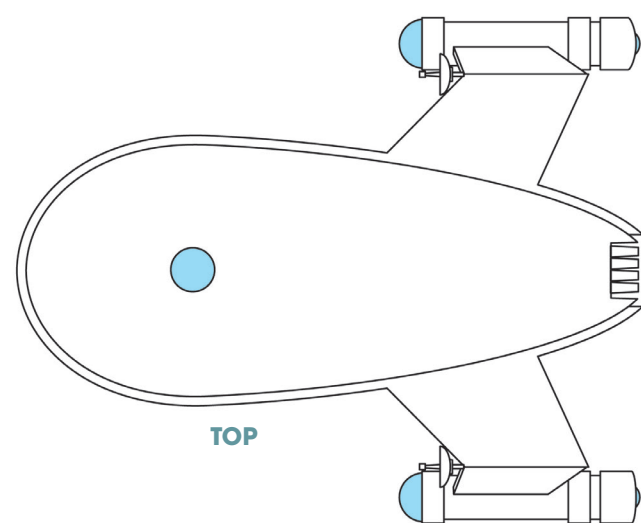
J-class starships were used in the 22nd century. These were large freighter ships, like the *ECS Horizon*, and were completely different than the small class-J starship used by Harry Mudd.

ASTEROID RATING

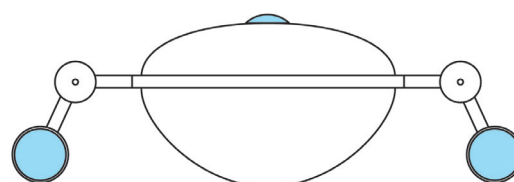
Asteroid belts were quantified by their "Schiller Rating." The asteroid field that Harry Mudd's starship entered had a Schiller Rating of 35 – a level that required the use of strong deflector shields to survive.

PRICELESS CRYSTALS

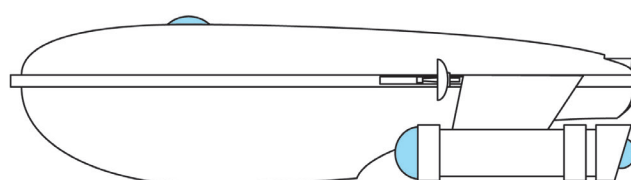
Lithium crystals were used to power the *Enterprise*. These crystals were processed in "cracking stations," such as the one on Delta Vega. According to Harry Mudd, they were worth three hundred times their weight in diamonds and thousands of times their weight in gold.



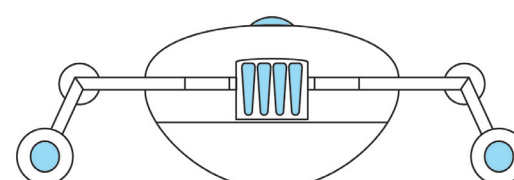
TOP



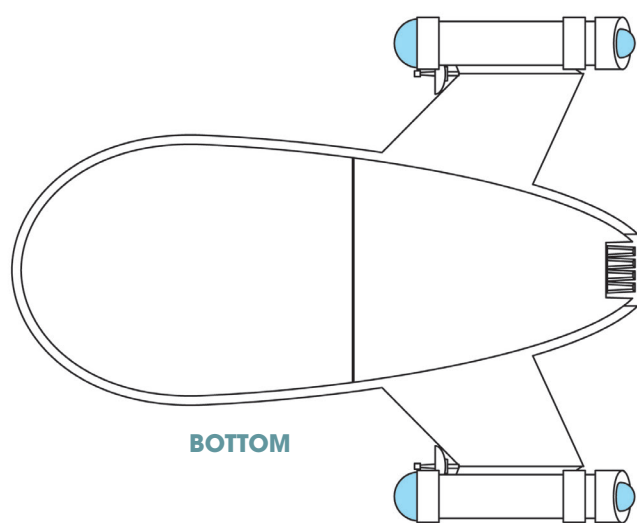
FRONT



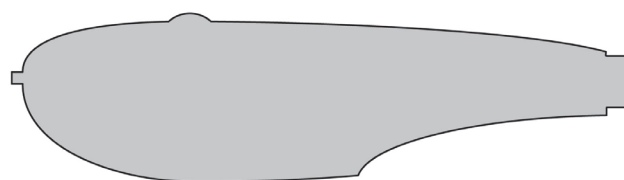
LEFT SIDE



BACK



BOTTOM



SECTION AT CENTERLINE

DESIGNING MUDD'S



STARSHIP

▲ Mike Okuda created these basic plans of Mudd's ship. He was careful to keep its design in the same style that had been established by Matt Jefferies for the ships he created in the 1960s.

Visual effects producer of the remastered *ORIGINAL* series Mike Okuda writes about the process of creating a digital version of Mudd's ship.

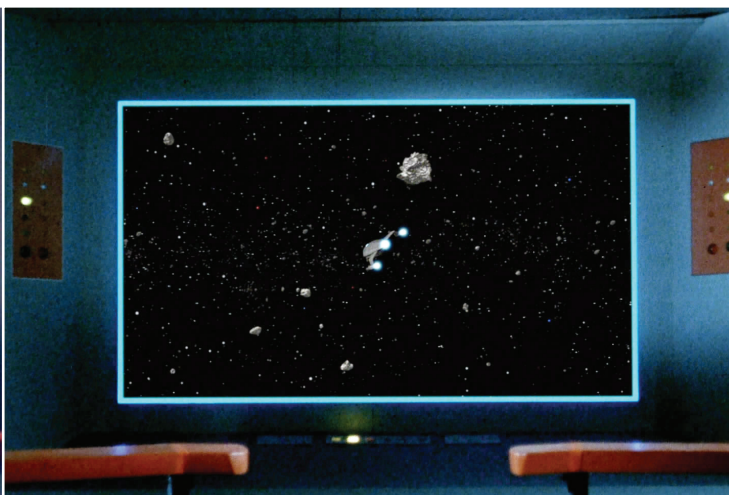
I was always fascinated by the original version of Harry Mudd's ship in 'Mudd's Women.' It was just this interesting rounded shape that bobbed around on the screen. This was made very early in the episodic run of the show, back when guest spaceships were nearly impossible. On *STAR TREK*'s

weekly episodic budget they were incredibly difficult, expensive and time-consuming, so they could rarely do them.

In the case of Mudd's spaceship, the team at the Joseph Westheimer optical effects company knew that the ship would only be seen as a small



▲ This picture shows how Mudd's starship was seen on the *Enterprise's* viewscreen in the episode that was first broadcast in 1966. It was basically just a simple piece of flat art shown on a starry background, but it did the job.



▲ For the remastered episode in 2004, Mudd's starship was upgraded to this design that was more realistic. They still decided to only show it from a distance and without great detail to keep it within the spirit of how it was originally shown.

blip on the view screen. They realized that while a ship model would be desirable, you could also tell the same story points with an undetailed piece of flat art. And that's exactly what they did. The folks at Westheimer created a simple curved shape – just a blob, really – and superimposed it over a star background. Very simple, but it made it possible for the shots to be made on *STAR TREK's* tight schedule.

UPDATING THE MODEL

Years later, when CBS Home Entertainment remastered *THE ORIGINAL SERIES*, we looked carefully at the Westheimer shots. We thought it would be fun to come up with something that paid tribute to the overall sensibility of the curved shape, but added an actual spaceship.

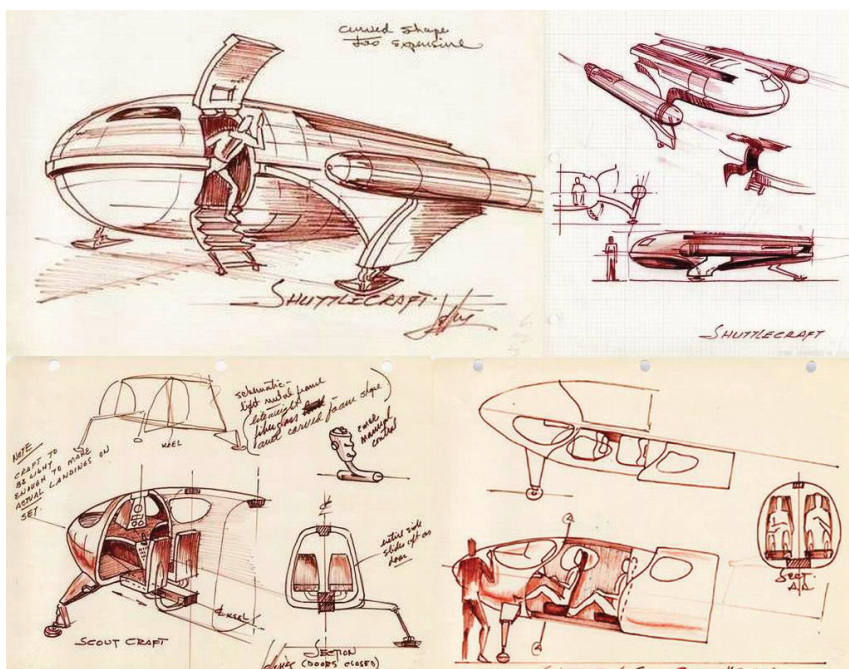
Dave Rossi, a supervisor on *STAR TREK* projects since 1990, my wife Denise and I approached visual effects supervisor Niel Wray at CBS Digital, asking him to construct a new digital model for the sequence. I came up with a design that mimicked the Westheimer blob, but also gave it some of the design elements of Matt Jefferies' style of interstellar travel. I gave it warp nacelles and the distinctive undercut on the back of the lower hull to tie into Matt's design for the *Enterprise*. Like the Westheimer original, this new ship would be seen only very small on the screen.

I put a dome on the upper hull that might have been an observation port, but Dave Rossi pointed out that we'd never see inside, so it would

definitely not be worth the time to make a window, or to add a windshield. For this reason, I asked that it be specifically designated as a sensor dome.

I mentioned that if we had seen Mudd's ship more clearly, I would have asked our friends at CBS Digital to put a name on the side, *Stella*, for Mudd's wife. Much later, when we asked CBS Digital to modify the digital model to serve as the *Aurora* in the remastered version of 'The Way to Eden,' we knew that the ship would represent a passenger yacht rather than a cargo ship, and that it would be seen from the side, so I asked them to add a windshield and passenger windows.

▼ This sketch of a shuttlecraft was drawn by Matt Jefferies in the 1960s. It was too expensive to be made into a model back then, but it served as inspiration for the look of Mudd's starship when it was reimaged in 2004.



Mudd's Women

Mudd's Women featured (from left to right in the adjacent picture) Eve played by Karen Steele, Ruth portrayed by Maggie Thrett and Magda played by Susan Denberg.

Steele was a Hawaiian-born model who appeared in more than 60 roles in film and television. In later life she settled in Arizona, but died from cancer at just 56. Thrett was a singer as well as an actress. In 1970, she was involved in a road accident while a passenger on recording artist Gram Parsons' motorcycle. Thrett escaped largely unscathed, but Parsons suffered significant injuries. Soon after, Thrett left the entertainment business, married and had three children. Denberg was the stage name of Dietlinde Zechner, a German-born Austrian chorus dancer who was a 1966 *Playboy* Playmate. She briefly flirted with an acting career, and in 1967 rumors surfaced that she had died of a drug overdose, or had become mentally unstable due to taking LSD. In reality, neither were true, and she returned to Austria.



The Cage

Perhaps the most famous of all the women to appear in *STAR TREK* was the green-skinned Orion slave girl named Vina, played by Susan Oliver. In a revised draft of the script for *The Cage*, Vina was described as following: "Wild! Green skin, glistening as if oiled. Her fingertips are long gleaming razor-edged scimitars, her hair not unattractive but suggesting a wild animal mane."

Oliver made over 100 TV appearances and she was also a passionate pilot. She was only the fourth woman to fly a single-engined aircraft solo across the Atlantic. On *STAR TREK*, she said: "The show was very special and it was fun to do the wild dance. It also meant hard work. Believe me, it was not easy to be green."

WOMEN OF

STAR TREK

The original *STAR TREK* often featured some remarkable and talented female guest stars. Here, we look at some of the most memorable, not to mention stunning, women who lit up the TV screen in the late 1960s.

Mirror, Mirror

In the mirror universe everyone was bad, including the captain's woman, Marlena Moreau. Actress Barbara Luna portrayed a woman who was every bit Kirk's equal and displayed a sensuality that was rare in our universe. Sadly, we never learned whether Kirk formed a relationship with her normal universe counterpart.

Luna's heritage is a mixture of Italian, Hungarian, Spanish, Portuguese and Filipino, and her exotic looks helped her land an extensive list of roles in both TV and films. Some of her notable appearances have been in *Buck Rogers in the 25th Century*, *Mission: Impossible* (also produced by Desilu Studios like *STAR TREK*), *Fantasy Island* and *T.J. Hooker* alongside William Shatner. During the filming of *Mirror, Mirror*, Luna came down with a 103-degree fever, forcing her kissing scenes with Shatner to be postponed for three weeks.



Wolf in the Fold

Dancing girl Kara (Tania Lemani) entertained patrons in a cafe on Argelius II, including an appreciative Kirk, McCoy and Scotty. After the show, she was asked to come over to the Starfleet officers' table and a particularly enamored Scotty offered to walk her through the foggy streets of the city. During the walk, she was murdered by the Redjac entity, which managed to make it appear as if Scotty had taken her life.

Lemani was born in Iran to Russian parents. After she moved to America, she trained as a classical ballet dancer. She moved to Las Vegas in search of work, but unable to find roles as a ballet dancer, she became a belly dancer. Offers to appear on TV and film followed, and later she was given more serious acting roles. One of these included a pilot for *Alexander the Great*, starring William Shatner.



Amok Time

The beautiful and logical T'Pol (Arlene Martel) nearly killed Kirk when she forced Spock to fight for her hand in marriage, but we can't help wondering: was she happy with Stonn?

Martel was among the actresses being considered for the role of Dr. Elizabeth Dehner in the second *STAR TREK* pilot *Where No Man Has Gone Before*. She ultimately turned down the role as it would have meant wearing silver contact lenses and her sensitive eyes just could not tolerate them. Later, she auditioned for the role of Sylvia in *Catpaw*, but the producers turned her down because they felt she would be much more suitable for T'Pol in an episode that was coming up.

Martel's ethnic ambiguity earned her the nickname 'The Chameleon,' and she appeared in countless TV and film roles.



A Private Little War

Nona, played by Nancy Kovack, was a Kahn-ut-tu woman, or 'healer' of the Hill People, on the planet Neural. She mesmerized Captain Kirk when she cured him of a mugato bite, but ambition proved her undoing and she died at the hands of rival villagers.

A cult American actress of the 1960s, Kovack's most notable role was as Medea in the action-fantasy film *Jason and the Argonauts*, alongside the creatures and monsters created by the legendary Ray Harryhausen. As well as her striking beauty, Kovack had brains to go with it, and she enrolled at the University of Michigan at the age of just 15. Kovack confessed to never wanting to be a major movie star, and preferred supporting roles instead. As well as starring alongside Kirk, her other roles saw her sharing screen time with other cultural icons such as Tarzan, Batman, Dean Martin and Elvis Presley.



Requiem for Methuselah

The android Rayna Kapec (Louise Sorel) was designed to be the perfect woman, but she couldn't cope when she was forced to choose between her creator and Captain Kirk. According to the *STAR TREK Encyclopedia*, Rayna Kapec was named for Karel Capek, the Czechoslovakian writer who first coined the term 'robot' in his science fiction play entitled *R.U.R.*

Sorel's *STAR TREK* appearance was not the first time she starred alongside William Shatner, as her debut role in *Route 66* saw her playing the wife of Shatner's character. Of her *STAR TREK* role, Sorel said, "They put me in this funny costume – I stood still and they just wrapped fabric around me. I loved working with Shatner. In the story, Flint forgot to give Rayna the tools to survive emotionally, and – when he and Kirk started fighting over her – she couldn't bear the pain."

The Cloud Minders

The beautiful Droxine played by Diana Ewing was the daughter of Plasus, the high advisor of Stratos on the planet Ardana. She lived a privileged life in a cloud city, while the surface dwelling Troglytes labored in gas-filled mines. Droxine provoked a surprisingly amorous reaction in Spock. A forward woman, she even asked him if the Pon farr mating cycle could be broken.

Ewing's acting career spans only eight years from 1969 to 1977, but she was very busy in her debut year. She guest-starred in five different TV shows besides *STAR TREK* including *The Mod Squad*, *Mission: Impossible* and *Gunsmoke*. One of her last TV appearances was in *The Rockford Files* in 1977. After this, it was rumored that she moved to Costa Rica with her husband to start an eco-tourism business.



Who Mourns for Adonais?

Lieutenant Carolyn Palamas, portrayed by Leslie Parrish, was the *Enterprise's* archaeology and anthropology expert. She was so striking that an alien who claimed to be the god Apollo fell in love with her, much to the chagrin of Scotty. Interestingly, in the original teleplay, at the end Palamas was revealed to be pregnant with Apollo's child, but this was cut from the filmed episode.

Parrish would wear the incredible Bill Theiss designed dress she wore in *STAR TREK* for an episode of *Mannix* entitled *The Girl in the Frame*. The dress was sold at auction in 1993, with the winning bid coming in at ten times its estimate at \$9,200.

Parrish said of her *STAR TREK* appearance, "My impression of it is that it's one piece of work that I'm very proud of. Of all the work I did, this is outstanding, because it is rooted in something which I believe so deeply."



Wink of an Eye

Deela, played by Kathie Browne, was Queen of the Scalosians. The males of her planet had become infertile after exposure to radiation. It also caused the entire population to accelerate out of the normal timeframe so that their hours were more like seconds. Deela planned to make use of the *Enterprise's* male crew to help repopulate her planet. She was also attracted to Captain Kirk, and the producers managed to slip a suggestive scene around the censors. The captain was seen sitting on the edge of his bed, putting his boots on, while Deela was brushing her hair – pretty racy for a prime time TV show in the 1960s.

Browne was a TV regular in the 1960s and 70s, playing numerous roles in shows such as *Perry Mason*, *Gunsmoke* and *The Rockford Files*, before she retired from acting in the 1980s.



All Our Yesterdays

Zarabeth (Mariette Hartley) was an inhabitant of Sarpeidon, who was exiled to an ice age in the planet's distant past because members of her family tried to kill the tyrannical leader Zor Kahn. She was sent to live alone, but was joined by Spock and McCoy when they accidentally misused a time portal. Zarabeth awoke Spock's suppressed emotions, but the nature of the time travelling technology meant she could not follow Spock back to his time.

The costume that Hartley wore in *STAR TREK* was designed so that it would not show her navel as the TV studio's standards and practices department forbade it, even though other navels had been shown in previous episodes. Roddenberry later cast Hartley in his pilot for *Genesis II*, in which her character was said to have two belly-buttons because "the network owed me one."



This Side Of Paradise

We all knew that Spock was in love with Jill Ireland's Leila Kalomi, but he couldn't admit it unless he was under the influence of the spores on Omicron Ceti III. The couple spent an idyllic time together until Captain Kirk reversed the spores' hold on Spock by provoking him to intense anger.

London-born actress Ireland had a highly successful career in both TV and film. She was married to actor David McCallum of *The Man From U.N.C.L.E.* and *NCIS* fame. After their divorce she married Hollywood star Charles Bronson. Unfortunately, Ireland died from cancer at the age of 54. Before her death, she became a spokesperson for the American Cancer Society and President Reagan gave her the American Cancer Society's Courage Award for her work.



What Are Little Girls Made Of?

Andrea, portrayed by Sherry Jackson, was a female android designed and built by Roger Korby. To show that she was unable to feel emotions, Korby ordered her to kiss and then hit Captain Kirk, which she did. Later, however, when Kirk kissed her more passionately, she felt unable to strike Kirk and claimed she was not programmed for him.

Remembering her kiss on *STAR TREK*, Jackson said of Shatner, "I must say when he kissed me on screen, he really kissed me!" She also recalled that Shatner had to shave his chest for his scenes in the android duplication machine.

Jackson revealed that she had a hand in helping William Theiss design the outfit that she wore on the show, and suggested that its 'hip-hugging' look inspired a fashion hit.

Elaan of Troyius

Elaan, the Dohlman of Elas was played by France Nuyen. The character was self-centered and had dreadful manners, but her tears had biochemical properties that made them into a real-world love potion. Fortunately for Captain Kirk, his love of the *Enterprise* helped him overcome the effect of her tears.

Elaan had more costume changes than practically any other character on *STAR TREK*, giving costume designer William Theiss plenty to do for this episode.

Nuyen vividly remembered the Cleopatra-style wig she wore for the part. As it wasn't fixed in place, it wouldn't turn at the same rate as her head if she moved it too fast. She often ended up with half her head on the wrong side of the wig, which she and the rest of the cast found hysterically funny.



Shore Leave

Tonia Barrows, played by Emily Banks, was part of the *Enterprise's* crew when she was briefly trapped on the Shore Leave planet. Dr. McCoy was particularly taken with her, and she blamed herself when he was apparently murdered by a Black Knight. When McCoy later returned in the company of two Rigelian chorus girls, Barrows was far from happy.

Much of this episode was filmed at Africa USA, a wildlife tourist attraction located in Florida. Barrows had this to say about her experiences: "I didn't realize that I was going to be running around with legs hanging out and shoulders hanging out. But I do remember I did a lot of running. There was a lot of running. And I remember thinking after the first couple of days, 'They don't want an actress, they want an athlete.'"



By Any Other Name

The Kelvan Kelinda (Barbara Bouchet) normally had 100 arms, but she adopted this more pleasing humanoid form when her people took control of the *Enterprise*.

Bouchet was born in Czechoslovakia and appeared in more than 80 films and TV shows. Some of her more notable roles have been Miss Moneypenny in *Casino Royale*, the comedy starring David Niven as James Bond, and Mrs. Schermerhorn in Martin Scorsese's *Gangs of New York*. In 1970, she was called to Italy to star in a film and remained in the country, carving out a highly successful career. By 1985, she had reinvented herself as a fitness guru. She started her own production company and launched her own line of fitness books and videos, as well as her own health club in Rome.



That Which Survives

Losira, played by Lee Meriwether, was the commander of a Kalandan outpost. Before her death, she programmed the outpost's computer with a holographic image of herself for defensive purposes. She would utter the phrase, "I am for you" before killing intruders with a simple touch.

Meriwether was a former Miss America who went to have a very successful acting career. She is perhaps best known for playing Catwoman in *Batman: The Movie* (1966), where she took over the role from Julie Newmar, who had played the role in the TV series. More recently, she was a regular on the soap opera *All My Children* and made guest appearances on *Desperate Housewives* and *Hawaii Five-O*.



ON SCREEN



TRIVIA

The episode 'Mudd's Women' marked the first appearance of the cyclorama display that was used to show different planets throughout the series. It was lit with different colored filters to give the impression that the crew were looking at different planets. Unfortunately, problems often arose when the colored gels either faded or burned up in front of the hot lights and produced an unbearable stink. The backdrop used for the planet Rigel XII in this episode was blue and it was also used in the episode 'The Enemy Within,' except it was colored brown.



Gene Dynarski played the chief miner on Rigel XII in 'Mudd's Women.' He also appeared as Krodak in the season three episode 'The Mark of Gideon,' and he later played Commander Orfil Quinteros in *THE NEXT GENERATION* episode '11001001.'

FIRST APPEARANCE: 'MUDD'S WOMEN' (DS9)

TV APPEARANCES: STAR TREK: THE ORIGINAL SERIES

DESIGNED BY: Mike Okuda, Niel Wray

KEY APPEARANCES

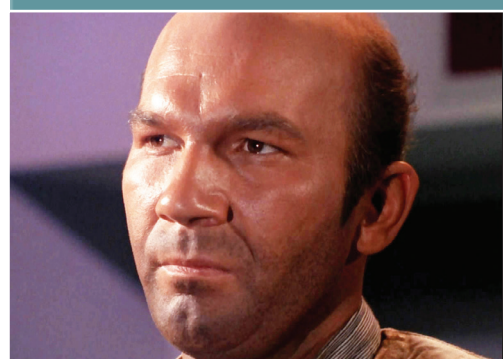
STAR TREK: THE ORIGINAL SERIES 'Mudd's Women'

The *U.S.S. Enterprise* NCC-1701 is in pursuit of a small unidentified vessel that is pushing its engines too hard. To avoid capture, the ship enters an asteroid field, but its engines overheat and it loses power. The vessel, which has now been identified as a class-J ship, is at serious risk of being hit by an asteroid. The *Enterprise* extends its deflector screen around the ship and manages to beam aboard its captain and three beautiful women before it is destroyed.

In the process of the rescue, three out of the four lithium circuits that power the *Enterprise* was blown and the

remaining one is damaged. Captain Kirk sets course for Rigel XII, where they can acquire new lithium crystals.

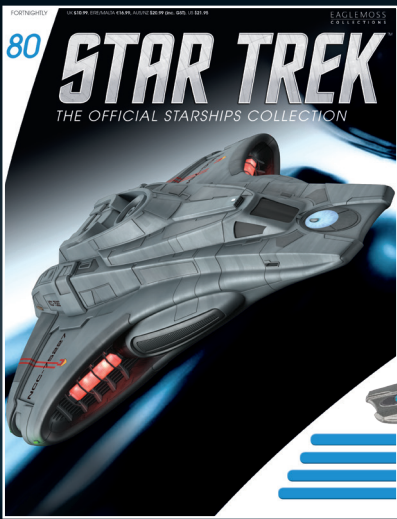
It transpires that the *Enterprise* has picked up intergalactic conman Harry Mudd, who planned to sell the women as brides. When he learns where they are going, he speculates that the miners might pay more for the women, while he can also use the situation to avoid going to jail for various crimes he has committed. His only problem is that the women's beauty is not natural, but has been enhanced by the Venus drug that he has been giving them. He therefore has to conclude the deal before the drug wears off if he is to escape justice.



'Mudd's Women' and the pilot episode 'Where No Man Has Gone Before' are the only episodes that refer to the *Enterprise* being powered by lithium crystals. It was decided to change it to the invented element dilithium in later episodes.

COMING IN ISSUE 80

FEDERATION SCOUT SHIP



EVERY
TWO WEEKS
AT YOUR
RETAILER



Inside your magazine

- In-depth profile of the **Federation Scout Ship**, a late 24th century warp powered craft capable of landing on a planetary surface
- Illustrator **John Eaves** talks about his design for the **Federation Scout Ship** from *STAR TREK: INSURRECTION*
- Production designer **Herman Zimmerman** explains the preparations that went into designing the Ba'ku village for *STAR TREK: INSURRECTION*

eaglemoss.com/shop

The place to order your STAR TREK ships

- **WANT 5% OFF YOUR NEXT ORDER?** Sign up to our newsletter and receive a unique discount code
- Sign up to be the first to hear when **STARSHIPS** are **BACK IN STOCK**
- All orders are delivered direct to your door. **ANY DAMAGES REPLACED - NO QUESTIONS ASKED!**



BINDERS

Order specially-designed binders to store your magazines. There are two designs to choose from.



BACK ISSUES

Complete your collection by ordering any missing issues, and sign up to the newsletter to be the first to know when rare items come back into stock.



eaglemoss.com/shop

STAR TREK™

