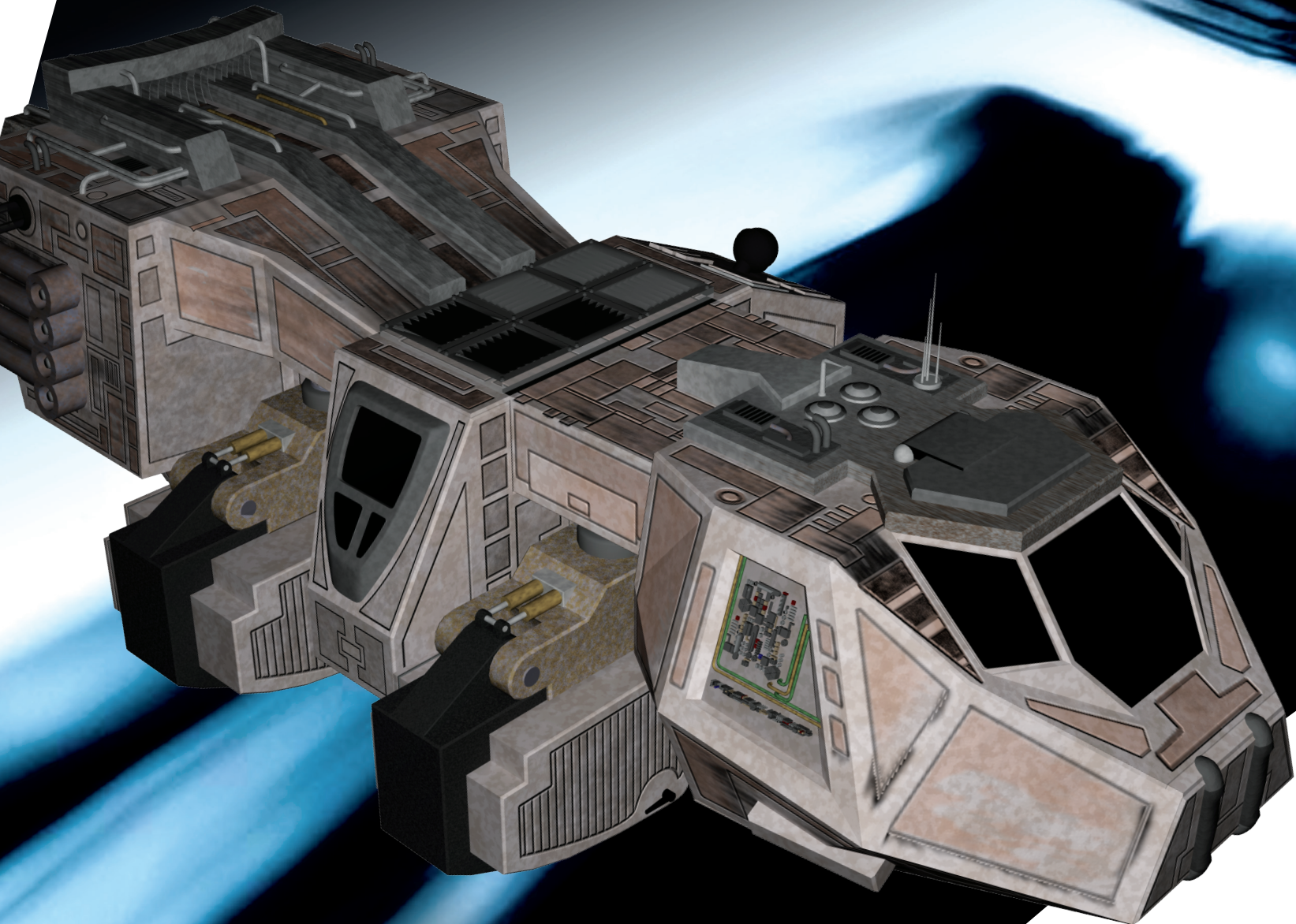


76

STAR TREK™

THE OFFICIAL STARSHIPS COLLECTION



BAXIAL

OWNED BY: NEELIX

LAUNCHED: 24th C

LENGTH: 15 METERS

WEAPONS: PHASERS

Contents

P04: **BAXIAL**

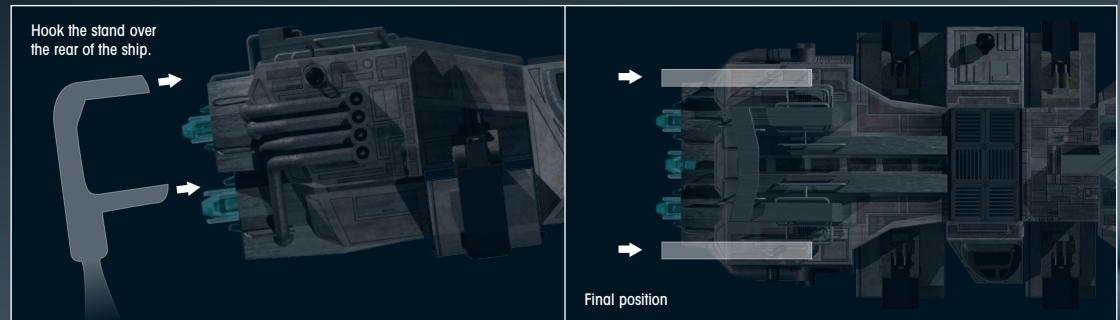
P10: **DESIGNING THE SHIP**

P12: **ETHAN PHILLIPS**

P18: **ON SCREEN**

BAXIAL

Stand assembly:



ORDER ONLINE

Order binders, missing issues or other Eaglemoss products at:

www.mycollectionshop.com



www.mycollectionshop.com

EAGLEMOSS COLLECTIONS

Eaglemoss Publications Ltd. 2016
1st Floor, Kensington Village, Avonmore Road,
W14 8TS, London, UK. All rights reserved.

™ & © 2016 CBS Studios Inc. © 2016 Paramount Pictures Corp. STAR TREK and related marks and logos are trademarks of CBS Studios Inc. All Rights Reserved.

Development Director:
Maggie Calmels

STAR TREK – The Official Starships Collection is published fortnightly.

DON'T MISS AN ISSUE: place a regular order with your magazine retailer.

SUBSCRIBE and receive exclusive free gifts – www.startrek-starships.com
Call 0344 493 6091
Post the subscription form included with issues 1 to 5

BACK ISSUES
To order back issues: Order online at www.startrek-starships.com or call 0344 493 6091

UK distributor: COMAG Magazine Marketing

 **Find us on Facebook**

Join us online for competitions, updates and more!

CUSTOMER SERVICES:
www.startrek-starships.com

UK: 0344 493 6091
startrek-ship@eaglemoss-service.com

Australia: (03) 9872 4000
bissett@bissettmags.com.au

New Zealand: (09) 308 2871
Fax: (09) 302 7661
subs@ndc.co.nz

South Africa: (011) 265 4307
service@jacklin.co.za

Malaysia: (03) 8020 7112
sales@allscript.com

Singapore: (65) 6287 7090
sales@allscript.com

OVERSEAS BACK ISSUES
Place your order with your local magazine retailer.

Recommended age 14+.
Warning! Collectable figurines.
Not designed or intended for play by children.
Do not dispose of in domestic waste.

www.startrek-starships.com

BAXIAL

SPECIFICATION



OWNED BY:

NEELIX

TYPE:

FREIGHTER

IN OPERATION:

24th CENTURY

LOCATION:

DELTA QUADRANT

LENGTH:

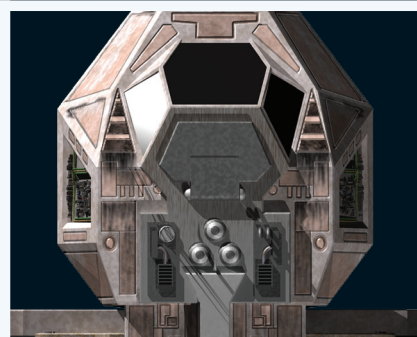
15 METERS (APPROX.)

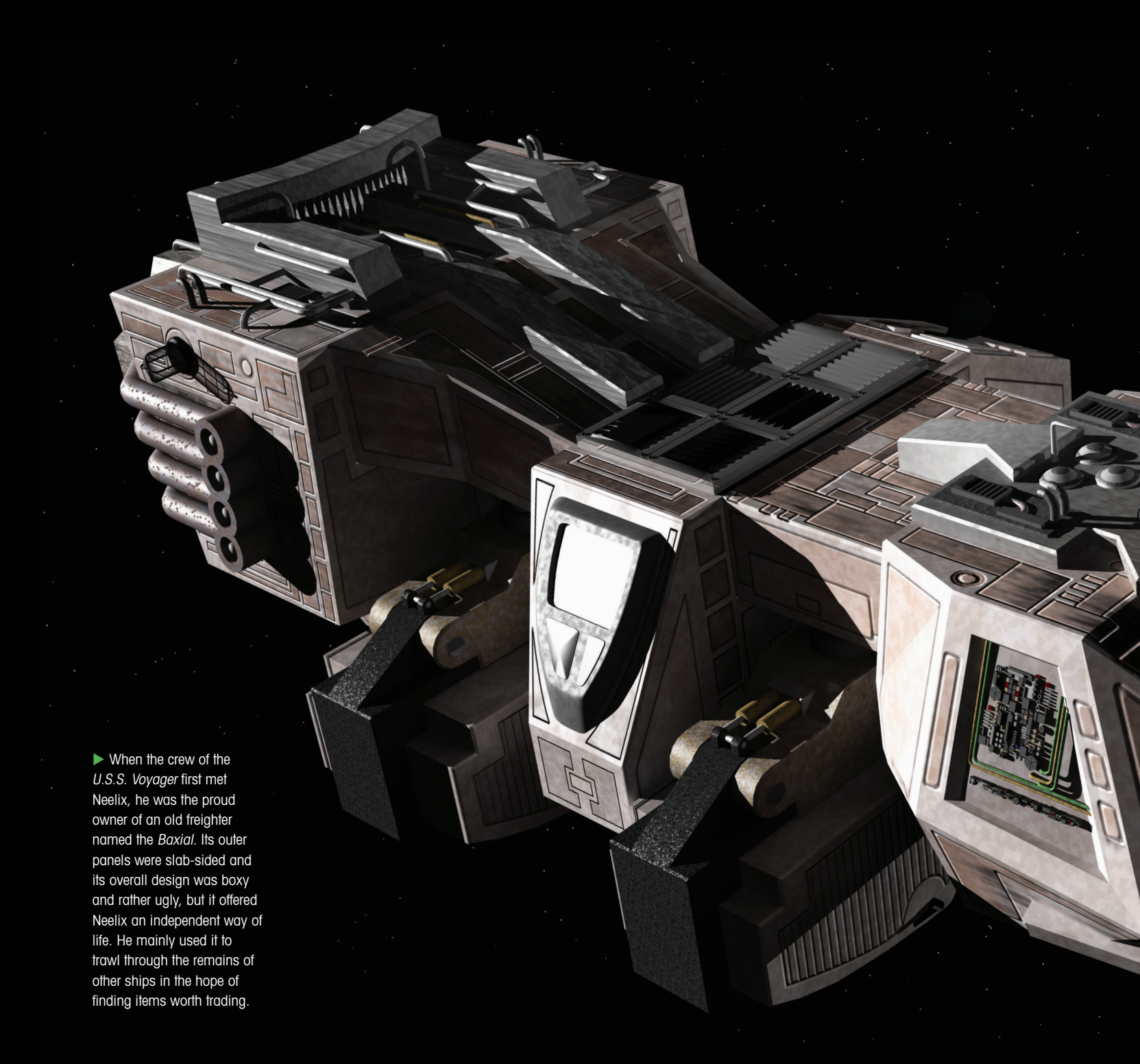
PROPULSION:

WARP POWERED

WEAPONRY:

PHASERS





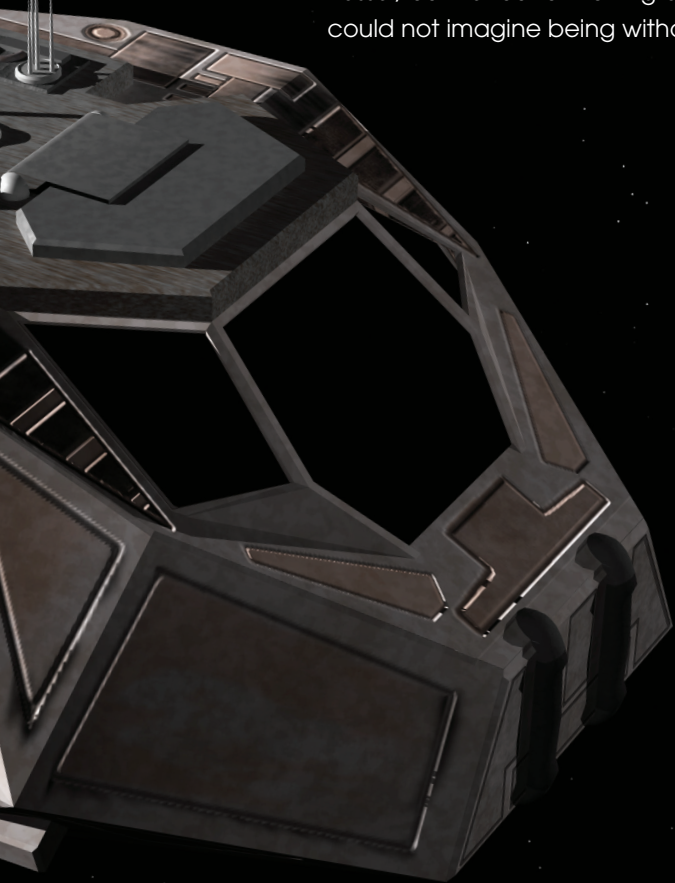
► When the crew of the *U.S.S. Voyager* first met Neelix, he was the proud owner of an old freighter named the *Baxial*. Its outer panels were slab-sided and its overall design was boxy and rather ugly, but it offered Neelix an independent way of life. He mainly used it to trawl through the remains of other ships in the hope of finding items worth trading.

BAXIAL

The *Baxial* was not much to look at and rather ungainly, but Neelix became very fond of his old freighter.

The *Baxial* was a small salvage or freighter-type vessel owned by Neelix in the 2370s. He used it to scavenge a living by combing through the wreckage of debris fields in the Delta Quadrant to search for items that might have some value.

The *Baxial* was approximately 15 meters long, and its appearance was rather ungainly. By Neelix's own admission, it was an ugly-looking vessel, but he found that it grew on him and he could not imagine being without it.



The *Baxial* was warp-powered and featured three exhaust ports at the rear that emitted a turquoise-colored glow. It was armed with basic phaser-type weapons, but they had limited firepower. It also featured various antennae located on the forward section of the vessel for subspace communications, and four landing pads on the ventral side, meaning it could touch down on a planetary surface.

JUMBLED INTERIOR

The cramped cockpit was in the head of the vessel and featured several touch-screen consoles that were operated from a standing position. The interior was somewhat chaotic and littered with an eclectic assortment of junk. As a trader trying to scrape a living, Neelix was never too sure what components or scraps of metal could prove valuable, and he appeared to have collected and stored it all in a random manner. He did have some more personal effects on board, including a preserved Talaxian fur fly that hung in the engine room. Among Talaxians, this huge insect was considered a sign of good fortune.

When the *U.S.S. Voyager* NCC-74656 first encountered the *Baxial* in 2371, Neelix appeared perfectly happy rooting through the wreckage in a debris field near the Ocampan homeworld. His only concern was that *Voyager* might also want to scour through what he considered to be his own debris field. When he was assured that this was not the case, Neelix was immediately more friendly to the crew and beamed aboard *Voyager*. He had



DATA FEED

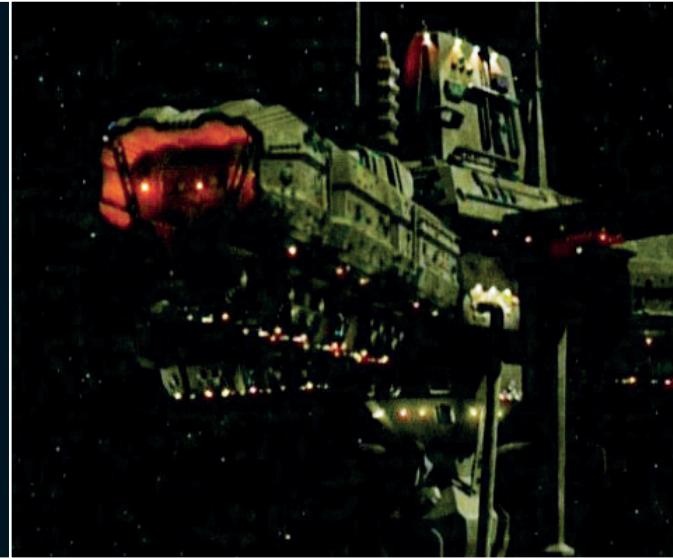
Before Neelix bought the *Baxial*, he worked on a mining colony, served as an engineer's assistant aboard a Trabalian freighter and spent six years on a Talaxian garbage scow.

◀ This image of Neelix on *Voyager*'s viewscreen was the crew's first sighting of the Talaxian. The interior of his ship was filled with a jumbled assortment of items that he had scrounged from abandoned space junk in the hope of trading it for things he needed.



▲ The crew of *Voyager* first came across the *Baxial* while it was poking about in a huge assortment of space junk that had accumulated near the Ocampan homeworld.

► The Akritiri prison was actually a space station. It was a brutal institution where the inmates were fitted with a synaptic stimulator in their brains that induced aggression and paranoia.



▲ Neelix was very happy with his ship, but it was extremely basic compared with the luxuries aboard *Voyager*. He was overjoyed to come aboard the Starfleet vessel, but his delight at his change in fortunes was not shared by all the crew, particularly the stoic Tuvok.

never heard of transporter technology before, and was astounded by the sophistication of the technology aboard the Starfleet ship. He was most delighted by the fact that *Voyager* seemed to have an almost limitless supply of something as basic as water, a substance that was extremely hard to come by in this region of space.

Given that Neelix had never enjoyed such luxuries before, it was not surprising that he asked if he could join the crew of *Voyager* after they had rescued Harry Kim, B'Elanna Torres and his girlfriend Kes from the Ocampan homeworld. His vessel was stored in one of the shuttlebays aboard *Voyager*.

Neelix quickly integrated himself into the crew, becoming a specialist guide to the Delta Quadrant, a chef and a self-appointed morale officer. His ship was seldom needed as *Voyager*

already had several shuttlecraft, and later the crew built the *Delta Flyer*.

BAXIAL MISSIONS

The *Baxial* did, however, prove useful on more than one occasion. In 2373, Neelix's ship was used to rescue Tom Paris and Harry Kim from a space station prison run by the Akritirians after they were falsely convicted of a bombing on Akritiri. Captain Janeway and Tuvok entered the prison and retrieved their crewmates, while Neelix managed to outmaneuver the Akritirian patrol ships as they made their escape back to *Voyager*.

In 2377, the *Baxial* was used for a similar rescue mission after most of the crew had been brainwashed and forced to work in a power facility on the Quarran homeworld. Neelix's ship was used

◀ Neelix was delighted with the facilities aboard *Voyager*, which were far in advance of anything he had on the *Baxial*. He was thrilled that they had so much water, and he enjoyed the decadence of taking a bath.

▶ Dexa and her son Brax were among the 500 Talaxian colonists that were threatened by the miners. Neelix and his ship helped fight off the miners, and later Neelix decided to stay with these Talaxians.



▲ The cockpit aboard the *Baxial* was small and basic. It featured several consoles that were operated from a standing position and used to control all the ship's functions.

◀ For the eight years Neelix spent on *Voyager*, his modest ship was stored in the shuttlebay. Its abilities did not compare well with Starfleet shuttles, and it was certainly inferior to the *Delta Flyer*.

to get through a Quarren security perimeter as Chakotay and Neelix went undercover disguised as prospective workers. They uncovered a conspiracy in which the crew had been abducted and had their memories erased by a rogue doctor, so they could fill a labor shortage on the planet.

In 2378, Neelix used the *Baxial* to help protect a colony of Talaxians, who had made their home in an asteroid. A group of miners wanted to remove them so they could blow up the asteroid field and process the ore it contained. Neelix secured the colony by helping them to install shield generators on their asteroid, and the miners left.

Following this, Neelix decided to stay with the colony, taking the *Baxial* with him. He planned to keep in contact with *Voyager* and act as an ambassador for Starfleet in the Delta Quadrant.

DATA FEED

A preserved Talaxian fur fly hung in the engine room of the *Baxial* for several years. This huge insect was native to the Talaxian homeworld. Despite its rather frightening appearance, the fly's presence on a ship was considered a sign of good fortune among Talaxians. In 2375, Neelix gave the fur fly to Chief Engineer B'Elanna Torres as a good luck charm after the crew constructed a quantum slipstream drive that was briefly used on *Voyager*.



SHIELDING TALAXIANS

In 2378, Neelix used the *Baxial* to protect another ship, which was planting force field emitters in an asteroid's surface to defend a Talaxian colony from a mining company. *Voyager* had stumbled upon about 500 Talaxians that had made a home for themselves in an asteroid field, but a group of miners decided to evict them as they wanted to process the ore in the asteroid field. Knowing that the Talaxians would always be under threat even if they moved, Neelix helped defend their home by assisting them in installing shield generators on their asteroid.

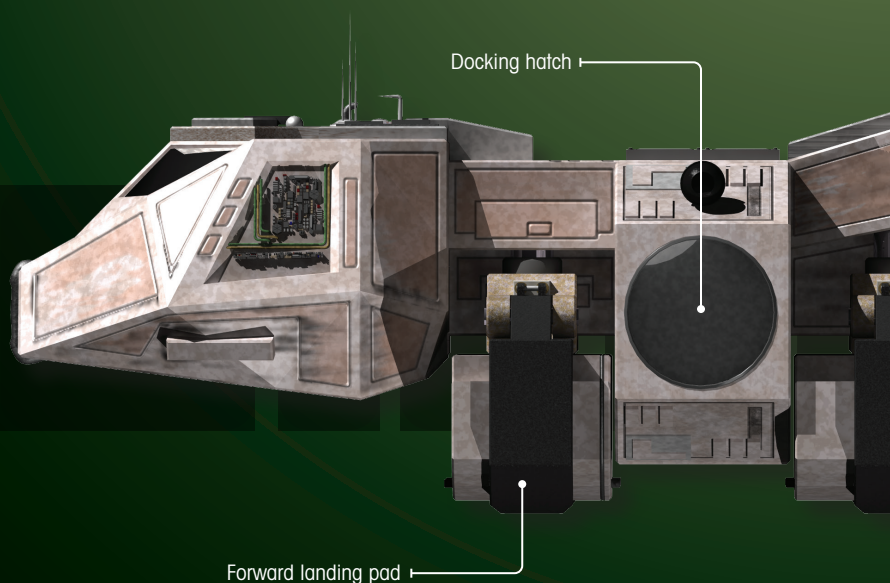
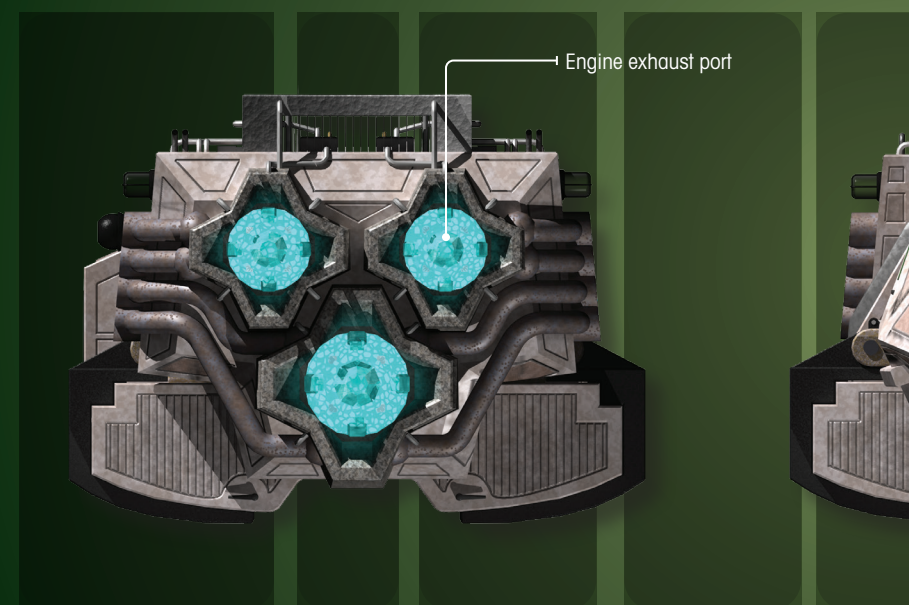
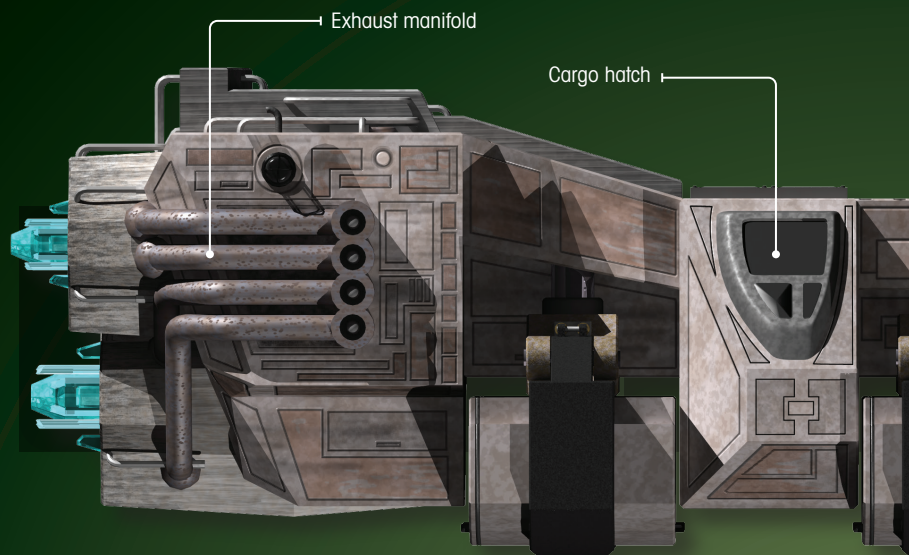
Despite being attacked by the miners' ship, the *Baxial* successfully defended a Talaxian fighter as it completed the shield emitter grid. The miners then realized it would be too difficult to remove the Talaxians and departed to search for more asteroids. Neelix had, meanwhile, become close with the Talaxians, particularly with Dexa and her son Brax, and decided to stay with the colony.

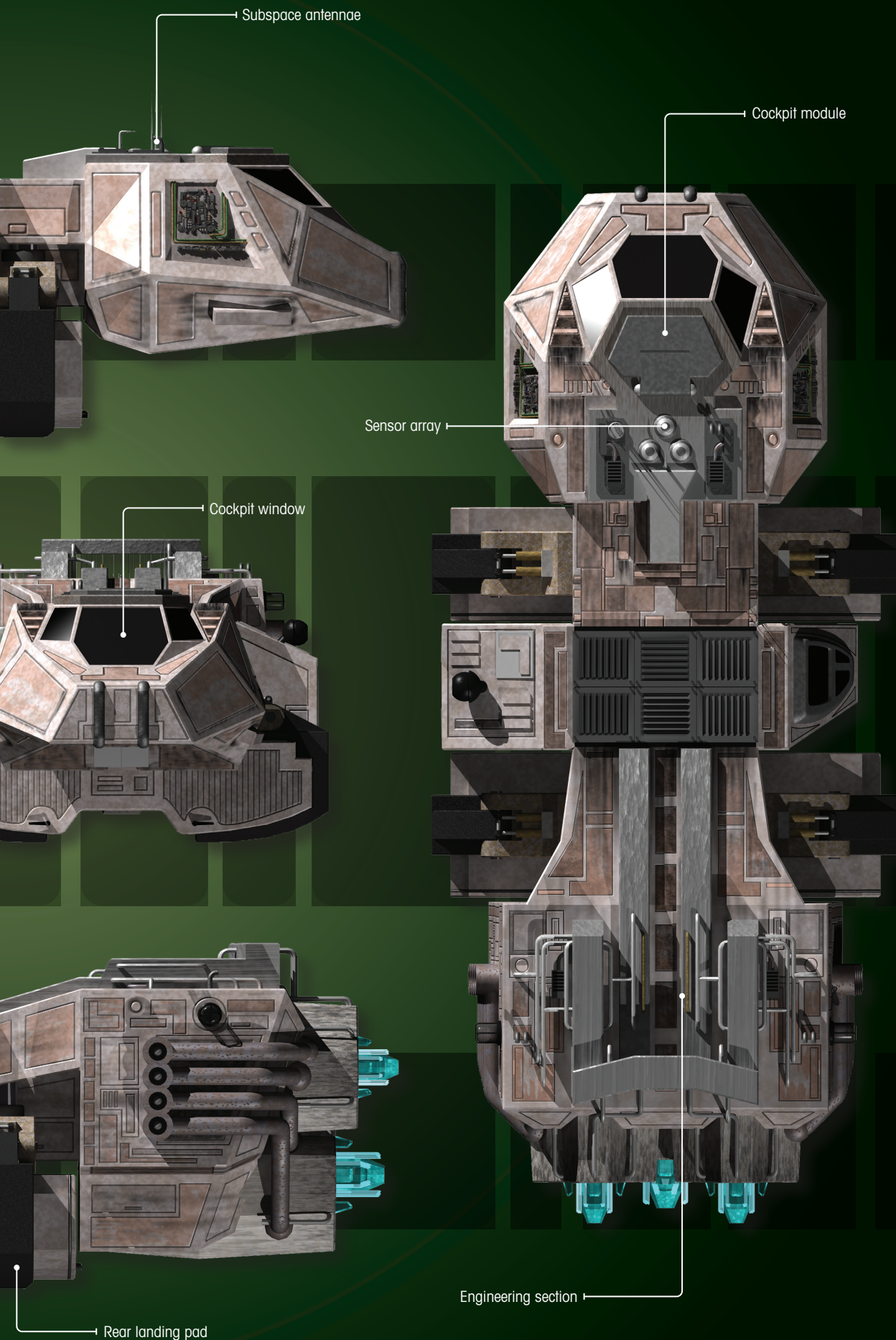


▲ Neelix maneuvered the *Baxial* between the miners' ship and a Talaxian fighter that was installing force field emitters to protect their home. The *Baxial* took heavy fire, but the mission was a success.

DATA FEED

The Talaxian race was an ancient one and may have been warp-capable as far back as the 1450s. The Talaxians suffered a major setback in 2356 when they were conquered by the Haakonian Order. A decades-long war ended when the Haakonians used a metreon cascade weapon that killed all 300,000 inhabitants of the Talaxian moon Rinax.





Subspace antennae

Cockpit module

Sensor array

Cockpit window

Engineering section

Rear landing pad

ALIEN HERITAGE

Neelix was one eighth Mylean, a neighboring species of the Talaxians. Neelix's great-grandfather was Mylean. This species had well-developed sweat glands, no taste buds and a fused spinal column.

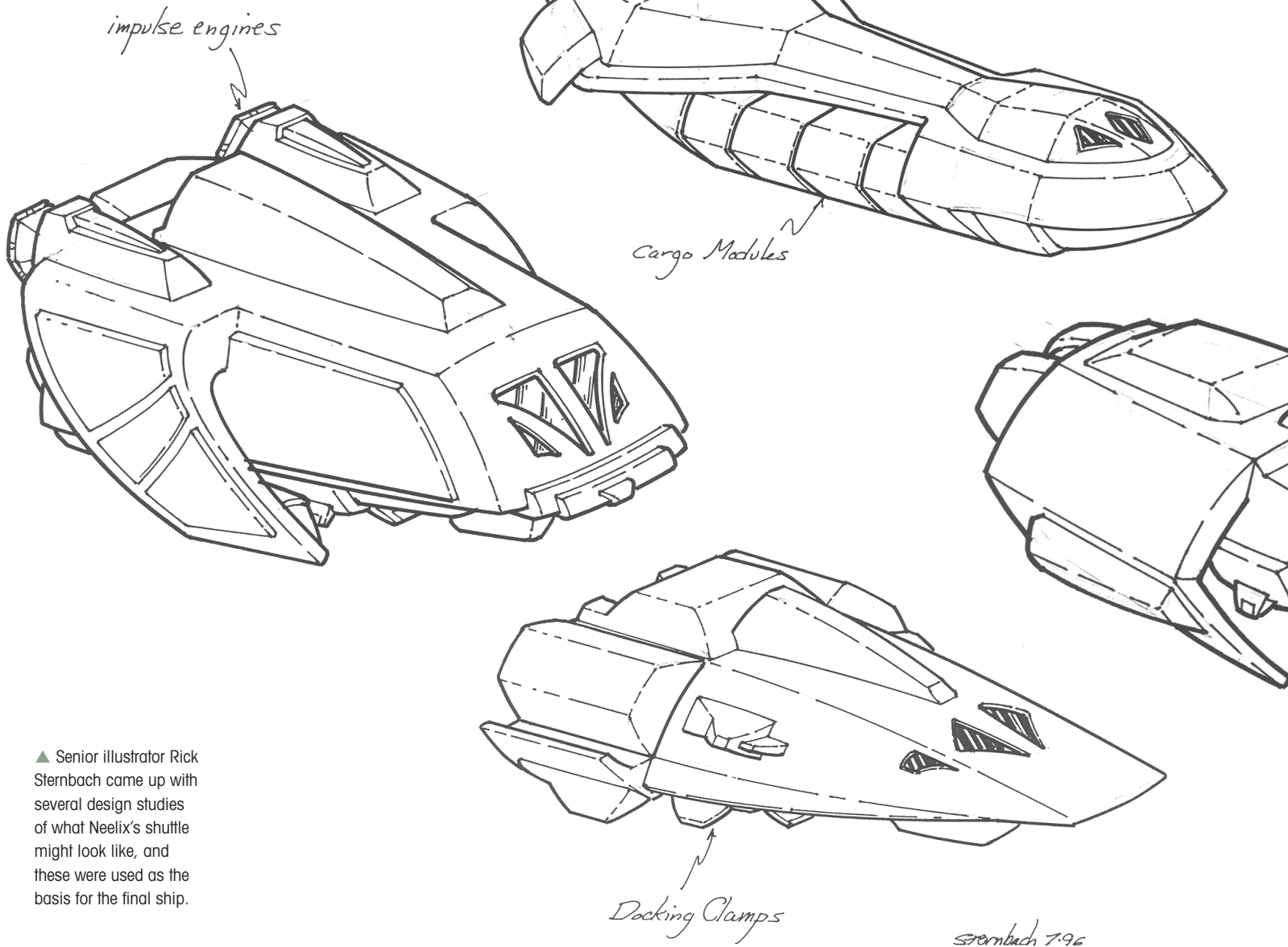
COMBAT PHYSIQUE

The Borg referred to Talaxians as Species 218. Talaxians had very dense musculature in their upper bodies and the Borg believed that this made them excellent combat drones.

DISNEY INSPIRATION

According to *STAR TREK* makeup artist Michael Westmore, Neelix's facial appearance of a spotted warhog-like design was based on a combination of various animals from the Disney film *'The Lion King.'* He said, "I gave him a tough rowdiness by designing a wig made out of goat hair and spiky meerkat eyebrows."

Voyager 3 "The Chute"
Neelix's Ship
Shape Studies 2



▲ Senior illustrator Rick Sternbach came up with several design studies of what Neelix's shuttle might look like, and these were used as the basis for the final ship.

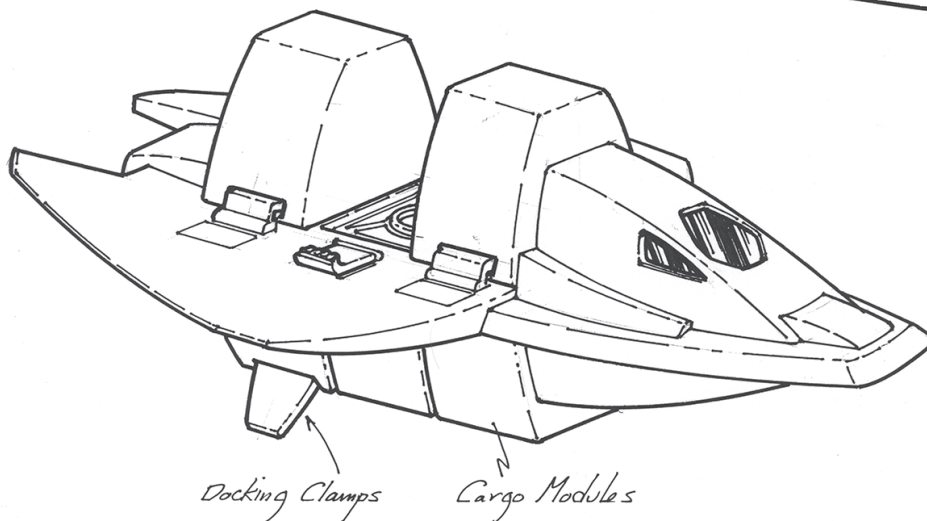
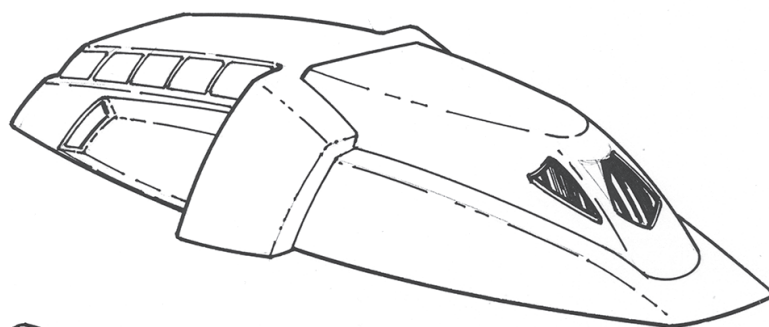
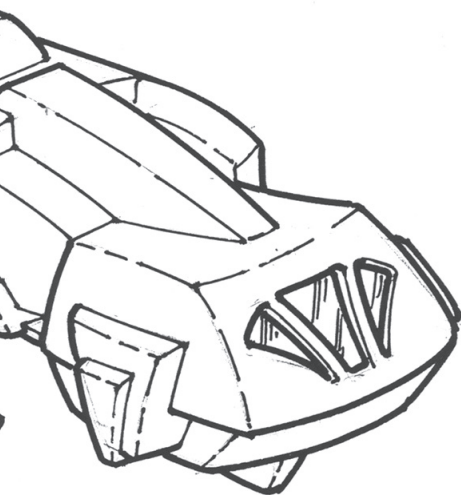
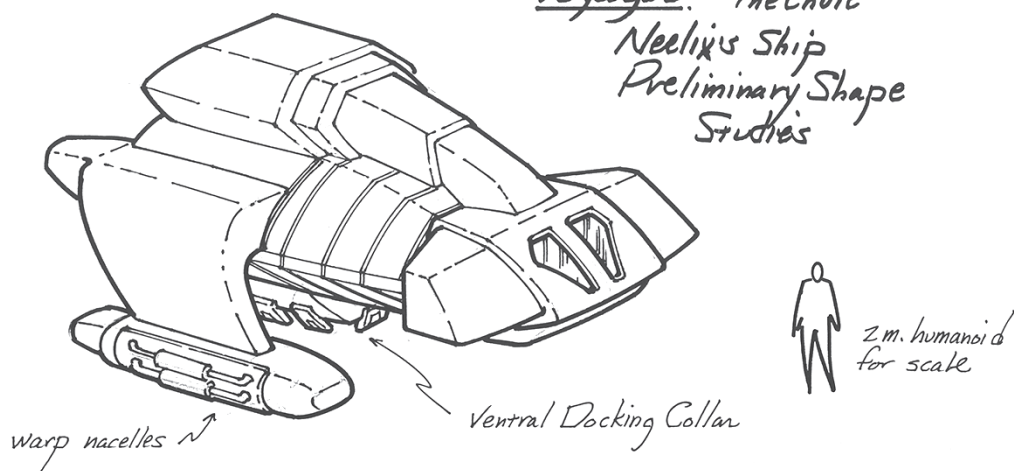
DESIGNING

III

NEELIX'S SHUTTLE

Rick Sternbach drew several designs for Neelix's shuttle that were then worked up and adapted into the finished ship by the CG artists.

Voyager 3 "The Chute"
Neelix's Ship
Preliminary Shape
Studies



The interior of Neelix's shuttle, the *Baxial*, appeared in 'Caretaker,' the pilot episode of *STAR TREK: VOYAGER*, but the exterior didn't feature until season three's episode 'The Chute.' Senior illustrator Rick Sternbach was asked to come up with some concepts, but he didn't have a lot to go on in terms of direction. All he knew was that the script described it as a "strange, small alien pod," and what Neelix looked like. With this in mind, he sketched out a few preliminary designs, pointing out on some of them where items such as the docking

clamps, cargo modules and engines were located. All of them shared the same basic architectural language, but at the same time the individual elements were placed in different positions.

At this point in *VOYAGER*'s production, life had become somewhat hectic for the visual effects teams. The vendor that they were using for motion control photography had a mass exodus of personnel and were unable to work on the show. This meant that they had to use CG, which was the direction they were moving in anyway. 'The Chute'

required a lot of CG work, including the creation of the Akritiri prison, which meant that there wasn't much time to generate Neelix's shuttle. The CG artists at the effects house Digital Muse quickly produced the *Baxial* based on the illustrations that Sternbach had provided, but it did end up looking quite different than the original concepts.

The *Baxial* was later remade for the season seven episodes 'Workforce' and 'Homestead,' when extra detail was added, including blinking lights and a blue glow from the rear engines.



ETHAN PHILLIPS

The actor talks about his experiences on *STAR TREK: VOYAGER* as the irrepressible Neelix, and how he brought the Talaxian trader to life.

CONTINUING in the *STAR TREK* tradition of alien crew members who have to live with Starfleet's humans, Captain Janeway's crew had to absorb a Talaxian and an Ocampan as well as Chakotay's Maquis group. Ethan Phillips was well known to TV audiences for his five-year stint on the popular TV show 'Benson' during the early 1980s and had a healthy theater and movie career to his credit. How did he feel about signing on for another potentially long run? "Well, I didn't believe it was going to be seven years!" Phillips said. "In fact, I thought every year was the last, because my experience as an actor is that you don't count your chickens. Each year was a

blessing, and I was grateful for the employment – it's very, very difficult in this business, as we know, to make a living, so a series is a real gift."

OTHER ROLES

Phillips had made an appearance in *STAR TREK: THE NEXT GENERATION*'s third-season show 'Ménage à Troi' as Dr. Farek, who tried to persuade commanding officer DaiMon Tog not to get involved with Lwaxana Troi. He also had a brief, uncredited cameo role in *STAR TREK: FIRST CONTACT* as the nightclub host who greeted Captain Picard and Lily Sloan. As he recalled, "We wanted to have the fans go, 'Hmm, isn't that

▲ Brought aboard the *U.S.S. Voyager* after it was stranded in the Delta Quadrant, Neelix became a local guide, a chef, a morale officer and, ultimately, a vital member of the crew. He was one of the last regular characters to be developed for the show, and was initially designed to add a touch of comedy in much the same way as Quark had done in *DEEP SPACE NINE*.

the guy who plays Neelix? We'll check the credits – oh, wait a minute, it's not in the credits! It was just kind of a goofy thing to do."

Phillips had played alongside *STAR TREK: DEEP SPACE NINE*'s René Auberjonois in 'Benson,' and their friendship encouraged him to revisit *STAR TREK* as a viewer when *DEEP SPACE NINE* came on the air. Previous to that, he had been an intermittent fan of the franchise. "When I was in graduate school in the mid 1970s I watched *THE ORIGINAL SERIES* every night for two years," said Phillips. "It was a tradition in the apartment complex I was staying in. All the people got together for dinner at six o'clock and we watched *STAR TREK* and ate our meals. I got totally into it, but then it just went out of my consciousness. When I did *THE NEXT GENERATION* I watched that episode, but I didn't really get into it, but when René did Odo I started watching a little of *DEEP SPACE NINE*, which I liked a lot. I found it very complicated and kind of creepy. I'm a fan of science fiction, but I've always been more of a reader. I find sci-fi novels real escapist – it's kind of nice to get into those worlds."

NO PRECONCEPTIONS

Obviously Phillips had no idea of the possibilities for Neelix's development when *VOYAGER* began. "I figured that since he was a regular, and I was supposed to be on every show, that he would be around," said Phillips. "But you don't really know where a character's going to go when you start out. You do it day to day, and you don't even think about it in terms of its – to use a word that's been overused – arc, until the whole thing's over and you can look back and see where the beginning and the end was."

Among all of the characters, Neelix had perhaps the hardest road to travel. The Maquis who joined the ship were dealing with familiar situations and people, even when they were in conflict, but the Talaxian, bereft of his family and his homeworld, had to make his way with a group of strangers and was eager to find a worthwhile role for himself. "They had a breakdown for the character that said he was a trader who might be a little bit of a brigand and a scoundrel," said Phillips. "But he found himself on the ship with more responsibilities, and he developed this big heart – he had a better heart than I did. And Neelix was a very generous

► Phillips had played the Ferengi Dr. Farek in *THE NEXT GENERATION* episode 'Ménage à Troi' before he was cast as Neelix. This role as a Ferengi gave him some idea of what he had let himself in for as he would have to spend long hours in the makeup chair when he accepted the part of Neelix.



► Phillips also played a cameo role in *STAR TREK: FIRST CONTACT* as the holodeck nightclub maître d'. He was deliberately left off the cast list in the credits so that fans could not confirm that he was the same actor who played Neelix. This was Phillips' only appearance in *STAR TREK* without wearing a large amount of makeup and prosthetics.



► Neelix and Tuvok became the 'odd couple' of the *Voyager* crew. The exuberant eagerness of Neelix often tried the patience of the stoic Vulcan to comic effect. Neelix greatly respected Tuvok and was keen to impress him, but the more he tried, the more tedious Tuvok appeared to find him. In the end, though, Neelix won him over and the two became friends.





▲ Neelix and Kes joined the crew of *Voyager* as a couple, but the relationship soon became sidelined as Kes found her own role aboard the ship, assisting the Doctor. While Kes found her calling as a nurse, Neelix became the ship's chef.

▲ ABOVE RIGHT: The pilot episode 'Caretaker' brought the *Voyager* crew to the Ocampan homeworld, where they encountered Kes and Neelix – and the Kazon. Fortunately, Neelix was something of an expert on all the different sects of the Kazon, and helped the crew deal with this aggressive race.

character. He was even aggressive sometimes in his generosity, and that could be annoying. He was a little too much in your face in terms of wanting to help, but that's how he was written and that's how I played him. In the beginning he just wanted to save Kes, so he found himself on board, but then he thought, 'Hey, this is a good place to be for a while.'"

Kes was, of course, Neelix's big relationship in the early days of the show. "As time went on they played up her relationship with the Doctor more than with Neelix," said Phillips. "I think the most prominent relationship for Neelix became the one with Tuvok, and his need to be acknowledged by him and have him show respect. With Neelix being so emotional and giving toward Tuvok, who's like a two-by-four, there was a good yin and yang there. Tuvok was the first guy to greet Neelix on the ship in the pilot, and so it was nice that at the end, when I left ('Homestead'), he gave me that very special and very specific farewell. It kind of completed the circle, and I liked that."

Fans often commented that Neelix was underused, but he had some strong shows over the seven years. "The ones I think of are 'Jetrel' and 'Mortal Coil' and 'Riddles,'" said Phillips. "Roxann Dawson (B'Elanna Torres) directed 'Riddles,' and

I thought it was a really good show. Bob (Picardo) and Tim (Russ) and Robbie (McNeill) all directed, but it was only with Roxann that I had a sizable role, and she was really, really good. She was very gentle and kept a great atmosphere. She knew exactly what she wanted but gave you a lot of leeway to play around, so it was a good working relationship. I would say my favorite would be 'Mortal Coil,' though. Allan Kroeker directed that, and Bryan Fuller wrote the script. I also liked 'Fair Trade,' where I met Wixiban."

FOCUSSED ON ACTING

Fellow cast members directed shows increasingly frequently, but Phillips never felt the urge. "I never have had any desire to direct," said Phillips. "I enjoy acting and I wouldn't want to be there all that time. There's just too much, and you've got to worry about everything. It just doesn't appeal to me. I don't think in terms of putting together a whole painting; I'd rather just concentrate on the stick figures walking around inside it. That was my impulse – just to become an actor."

And, as an actor, Phillips had the opportunity to help define a whole new race. "I had some ideas and suggestions," said Phillips. "I would meet with Brannon Braga at the beginning of each year and



◀ After Neelix had appointed himself chef, he took over part of the mess hall as his kitchen. To Janeway's exasperation, he also converted her private dining room into a storage area.



◀ An unwelcome face from the past brought trauma for Neelix. The scientist Mabor Jetral had invented the metreon cascade weapon that destroyed the Talaxian moon on which he had been brought up.



◀ The audience was reminded of Neelix's history as a trader in 'Fair Trade,' when he and his former associate Wixiban stole a cylinder of warp plasma at the Nekrit Supply Depot. Phillips cited this episode as one of his favorites for the way Neelix's character grew.

pitch him some of my thoughts, some of which he used and some of which he didn't. But because I was the prominent Talaxian – virtually the only one we saw, for a long time – and because there's hopefully very little distance between an actor and a character, I think my personality came through. But not every Talaxian was going to be like Neelix. There were probably some bad Talaxians, violent Talaxians, aggressive Talaxians – there was Wixiban, who was kind of a criminal – so they were just like everybody else. They had a plethora of characteristics within the species.

"But I think you could say they were basically a gentle people," continued Phillips. "They were vegetarians, and they didn't like to fight. That ragtag band of Talaxians we met in Neelix's final episode kept having to move to different planets because they wouldn't stand up to their enemies and fight. And when they fought the Haakonians, they lost.

"I don't think they were a warrior-type species. They were short and furry and friendly looking, and a lot of emphasis was put on family and food and holidays and that kind of thing, so they were very domestic, and they had a great sense of fun and play. I don't know if the writers intended those things, but that was how it happened, and that was why Neelix's roguishness disappeared. I rarely play villains or mean people, and I think they wrote to that part of me that tends to be cast as a nicer kind of guy.

LIVING THE ROLE

"The writers saw who you are, and I think they subconsciously followed that. You were on the set so long, all day, and you were going back and forth from yourself to the character, and you tried to focus on who the character was and you played the lines, but really you were the character. I couldn't be somebody completely different. There are some actors that can do that – I think of Meryl Streep or Alec Guinness or people who completely change who they are, and they're unrecognizable. I'm not saying I don't have the ability to do that, but when people watch TV they want to come back each week and like the characters and feel comfortable with them, and I think it's only right that they cast somebody who is going to bring who they are to the character in



▲ As part of his job as morale officer, Neelix created the Paxau Resort program on the holodeck based on an exclusive retreat on Talax.

a relaxed way. A lot of who I am went into Neelix, and I think that was the easiest and the proper way to do it. Your little quirks and peccadilloes will come out at some point. You only have so many mannerisms, and TV will eat them up.”

IN THE MAKEUP CHAIR

Now for the obvious question – the makeup. In 2002, Phillips became a Ferengi for the *STAR TREK: ENTERPRISE* episode ‘Acquisition,’ a prosthetic known to be the most uncomfortable, but how did seven years of Neelix compare? “After wearing the Ferengi makeup I realized Neelix was a lot nicer, but it was a bad thing,” said Phillips. “It was horrific. It was just not something one would do – maybe on Halloween, but not for seven years. The worst part was the contact lenses. They were very, very difficult on my eyes, and there were periods where I couldn’t even wear them, my eyes hurt so much – you’ll see episodes where Neelix has brown eyes. In fact there’s even a trading card where I have brown eyes – that was a time when I just couldn’t wear them. They take a lot of getting used to, and sometimes you get actors who have never worn them and all of a sudden they’re expected to do it. I wore contact lenses so I could deal with it, and they remained fairly comfortable for the first three or four seasons, but then I started to get some

► Phillips had to endure the makeup process that turned him into Neelix for seven years. His day would often start as early as 4am and sometimes it would not finish until around 10pm. Despite the hardship, Phillips said that the makeup really helped the character come alive.



▲ Phillips also played a Ferengi in *STAR TREK: ENTERPRISE*. He said the Ferengi makeup was even more uncomfortable than that for Neelix.

irritation, I actually had to go to the doctor, and I found that I had developed some bumps on the inside of my eyelid from them.

“And the makeup was just sticky and gummy and hot, and just really yeeuch,” continued Phillips. “The only part that was me were my lips and chin, but they were both painted with an acrylic mixed with adhesive. It was invented for ‘Tootsie’ so that Dustin Hoffman’s beard wouldn’t grow through the makeup by the end of the day. So you were pretty much covered with rubber there too, and you were covered all the way down to the bottom of your neck. So, it was very, very warm. And you





and patience. Without that it would have been less enjoyable.

Apart from becoming morale officer and unofficial diplomat, Neelix formed a close bond with young Naomi, born aboard ship to Ensign Samantha Wildman. “Scarlett (Pomers) was a doll, a real pro,” said Phillips. “She could joke around with the best of them and she was fun to work with, but when they said ‘Action’ she was right there with the lines. There’s a thing they say about working with animals and children. You’ve got to be good on every take, because they often aren’t, and they’re going to pick the take they’re good on, so you’d better be on your toes. But with Scarlett it wasn’t like that. She was great on every take. She was skilled and very well trained.”

FITTING FINALE

Neelix’s finest hour eventually came with his final show, ‘Homestead,’ where he encountered a group of Talaxians who were faced with losing their adopted homeland. “When Ken Biller (executive producer) told me what was going to happen, I was at first a little sad that he wasn’t going back to Earth with the rest of the crew” said Phillips. “But the more I thought about it, the more I decided they were right. Why should he go back to Earth? He wasn’t from Earth. He didn’t have anything going on down there. Instead he ran into this beautiful creature who was Talaxian, just like him, and she had a child, and he had the option to be a father and a husband and a man of respect in a community of his own people. He saved this band of Talaxians from their aggressors, and he became a hero. With Neelix, you really got some closure.”



◀ Neelix became something of a father figure to Naomi Wildman, the youngest member of the crew aboard *Voyager*. Phillips was very complimentary about his young co-star, saying that it was a delight to work with her, and that she had an acting professionalism far in advance of her tender years.

couldn’t lie down or sleep in it, because if you lolled and your chin touched your chest it would stick to itself, and you couldn’t lean back or you’d crush the wig, which was expensive, so you really had to be awake. I would get there at four or four-thirty in the morning and stay some days until 10 or 11 in the evening, and when the contacts were in I couldn’t read, and I couldn’t talk on the phone because it would stick to the makeup, so there was not too much I could do! You were kind of imprisoned for the time you were there.

“And once you started sweating it was like little ants crawling around inside your head, and you couldn’t scratch, obviously. Usually, people touch their faces all day long. We’re always patting or tweaking our chin or cheeks or forehead, or rubbing our eyes. We’re doing a million things to our faces all day long because they tingle, and in makeup you can’t do that, so your face and head are constantly prickling. It was a lesson in acceptance. And of course I’m talking about makeup that came off at the end of the day. Some people have MS or cystic fibrosis or something serious that they have to accept, and that’s much harder, but it does come down to the same thing – acceptance. But I figured I sat in the makeup chair probably about 2,700 hours over the course of the seven years. You’ve got to have a makeup artist who has a very steady mood and a professional temperament. Scott Wheeler did it every single time, and he has extraordinary artistry

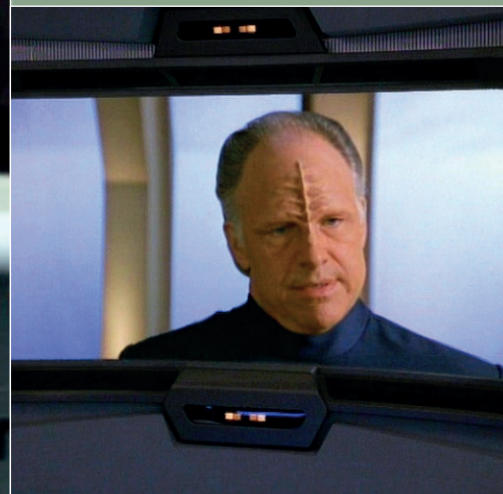
◀ Neelix made his final appearance before *Voyager* returned to Earth. In ‘Homestead,’ he encountered a group of Talaxians who badly needed leadership to help them stay on their adopted homeland, and he finally found a heroic role and family life. Phillips was particularly happy with this ending, as he felt it provided the right sense of closure for the character.

ON SCREEN



TRIVIA

Ambassador Liria [pictured below], the representative of the Akritirian government, was played by Robert Pine in the *STAR TREK VOYAGER* episode 'The Chute'. He is the father of Chris Pine, who stars as Captain Kirk in the J.J. Abrams reboot of the *STAR TREK* films. Robert Pine also played the role of Captain Tavin, a Vulcan who did not believe in repressing his emotions, in the *STAR TREK: ENTERPRISE* episode 'Fusion.'



Rosemary Morgan, who played Piri in 'The Chute,' is the daughter of Julie Cobb, who portrayed Yeoman Leslie Thompson [pictured below] in *THE ORIGINAL SERIES* episode 'By Any Other Name.'



At the beginning of 'Homestead,' Neelix is throwing a party in the mess hall celebrating the 315th anniversary of Zefram Cochrane's first warp flight and Earth's first encounter with Vulcans. The song being played on the juke box is an instrumental version of Roy Orbison's 'Ooby Dooby,' which Cochrane put on in *STAR TREK: FIRST CONTACT*.

- FIRST APPEARANCE:** 'Caretaker' (VOY)
- TV APPEARANCE:** STAR TREK: VOYAGER
- DESIGNED BY:** Rick Sternbach

KEY APPEARANCES

STAR TREK: VOYAGER **'The Chute'**

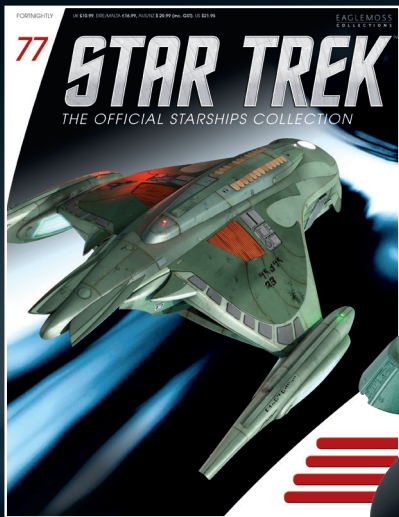
Tom Paris and Harry Kim are wrongly convicted of a terrorist bombing and thrown in an Akritirian prison. Living conditions are horrendous as there are no guards and prisoners have a synaptic stimulator embedded in their brains designed to cause aggression and irritation. As the days pass, Paris and Kim try to hold on to reality, while Captain Janeway has little success in negotiating their release. Eventually, Janeway takes matters into her own hands as they use Neelix's ship, the *Baxial*, to mount a secret raid on the prison in a bid to free their crewmates.

STAR TREK: VOYAGER **'Homestead'**

The *U.S.S. Voyager* discovers a colony of Talaxians living in an asteroid field. At first the Talaxians are suspicious of them, even Neelix, but then the crew learn a group of alien miners are demanding that they leave so they can exploit the ore-rich asteroid. Neelix feels compelled to help, even if the Prime Directive means that the *Voyager* crew are unable to intervene. He uses his ship, the *Baxial*, to defend a Talaxian vessel from the miners while it embeds a series of shield emitters in the asteroid. Having grown close to one of the women, Neelix decides to remain on the colony.

COMING IN ISSUE 77

ROMULAN SHUTTLE



EVERY
TWO WEEKS
AT YOUR
RETAILER



Inside your magazine

- In-depth profile of the **Romulan shuttle**, a 24th-century executive craft that Senator Vreenak used to travel to *Deep Space 9*
- **Doug Drexler** explains how his Amazonian parrot was part of the inspiration behind his design of the **Romulan shuttle**
- An interview with **Andrew Robinson**, the actor behind Elim Garak, and the character who blew up the **Romulan shuttle**

eaglemoss.com/shop

The place to order your STAR TREK ships

- WANT 5% OFF YOUR NEXT ORDER? Sign up to our newsletter and receive a unique discount code
- Sign up to be the first to hear when **STARSHIPS** are **BACK IN STOCK**
- All orders are delivered direct to your door. **ANY DAMAGES REPLACED - NO QUESTIONS ASKED!**



BINDERS

Order specially-designed binders to store your magazines. There are two designs to choose from.



BACK ISSUES

Complete your collection by ordering any missing issues, and sign up to the newsletter to be the first to know when rare items come back into stock.



eaglemoss.com/shop

Register today and receive 5% off your next order.
Express delivery and standard postage available.

Free P&P on orders over £30.
UK & Eire only.

STAR TREK™

